

Datasheet for ABIN571110

anti-MAPRE3 antibody (Internal Region)**2** Images[Go to Product page](#)

Overview

Quantity:	100 µg
Target:	MAPRE3
Binding Specificity:	Internal Region
Reactivity:	Human, Mouse
Host:	Goat
Clonality:	Polyclonal
Conjugate:	This MAPRE3 antibody is un-conjugated
Application:	Western Blotting (WB), ELISA

Product Details

Purpose:	MAPRE3
Immunogen:	Peptide with sequence SGRLSNVAPPCILR, from the internal region of the protein sequence according to NP_036458.2.
Sequence:	SGRLSNVAPP CILR
Isotype:	IgG
Cross-Reactivity:	Cow, Dog, Human, Mouse
Purification:	Purified from goat serum by ammonium sulphate precipitation followed by antigen affinity chromatography using the immunizing peptide.
Grade:	Verified

Target Details

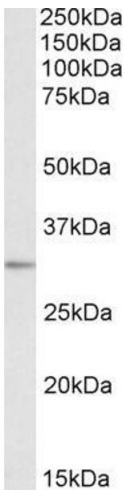
Target:	MAPRE3
Alternative Name:	MAPRE3 (MAPRE3 Products)
Background:	MAPRE3, microtubule-associated protein, RP/EB family, member 3, EB3, EBF3, EBF3-S, RP3, APC binding protein
Gene ID:	22924, 100732
NCBI Accession:	NP_036458

Application Details

Application Notes:	Western Blot: Approx 32 kDa band observed in Human Brain (Cerebellum and Amygdala) and Mouse Brain lysates (calculated MW of 32 kDa according to NP_036458.2). Recommended concentration: 0.1-1.0 µg/mL. Peptide ELISA: antibody detection limit dilution 1:64000.
Restrictions:	For Research Use only

Handling

Format:	Liquid
Concentration:	0.5 mg/mL
Buffer:	Supplied at 0.5 mg/mL in Tris saline, 0.02 % sodium azide, pH 7.3 with 0.5 % bovine serum albumin.
Preservative:	Sodium azide
Precaution of Use:	This product contains Sodium azide: a POISONOUS AND HAZARDOUS SUBSTANCE which should be handled by trained staff only.
Handling Advice:	Minimize freezing and thawing.
Storage:	-20 °C
Storage Comment:	Aliquot and store at -20°C, with minimal freeze/thawing. A working aliquot may be refrigerated at 4°C for a few weeks and still remain viable.



Western Blotting

Image 1. ABIN571110 (0.1µg/ml) staining of Human Brain (Amygdala) lysate (35µg protein in RIPA buffer). Primary incubation was 1 hour. Detected by chemiluminescence.



Western Blotting

Image 2. ABIN571110 (0.3µg/ml) staining of Mouse Brain lysate (35µg protein in RIPA buffer). Primary incubation was 1 hour. Detected by chemiluminescence.