

Datasheet for ABIN571111

**anti-MAPRE3 antibody (AA 151-164)**[Go to Product page](#)**1** Image

## Overview

Quantity:	100 µg
Target:	MAPRE3
Binding Specificity:	AA 151-164
Reactivity:	Human, Mouse, Rat
Host:	Goat
Clonality:	Polyclonal
Conjugate:	This MAPRE3 antibody is un-conjugated
Application:	Western Blotting (WB), ELISA

## Product Details

Purpose:	MAPRE3 (aa151-164)
Immunogen:	Peptide with sequence C-KLIGTAVPQRTSPT, from the internal region of the protein sequence according to NP_036458.2.
Sequence:	KLIGTAVPQR TSPT
Isotype:	IgG
Cross-Reactivity:	Cow, Dog, Human, Mouse
Purification:	Purified from goat serum by ammonium sulphate precipitation followed by antigen affinity chromatography using the immunizing peptide.
Grade:	Verified

## Target Details

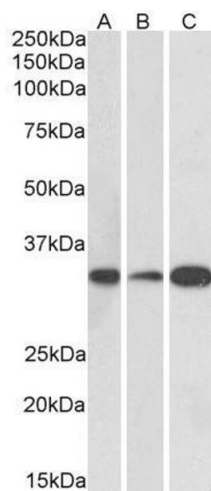
Target:	MAPRE3
Alternative Name:	MAPRE3 ( <a href="#">MAPRE3 Products</a> )
Background:	MAPRE3, microtubule-associated protein, RP/EB family, member 3, EB3, EBF3, EBF3-S, RP3, APC binding protein
Gene ID:	22924, 100732
NCBI Accession:	<a href="#">NP_036458</a>

## Application Details

Application Notes:	Western Blot: Approx 33 kDa band observed in Human (Cerebellum), Mouse and Rat Brain lysates (calculated MW of 32.0 kDa according to Human NP_036458.2, Mouse NP_579928.1 and Rat NP_001007657.1). Recommended concentration: 0.1-0.3 µg/mL. Peptide ELISA: antibody detection limit dilution 1:16000.
Restrictions:	For Research Use only

## Handling

Format:	Liquid
Concentration:	0.5 mg/mL
Buffer:	Supplied at 0.5 mg/mL in Tris saline, 0.02 % sodium azide, pH 7.3 with 0.5 % bovine serum albumin.
Preservative:	Sodium azide
Precaution of Use:	This product contains Sodium azide: a POISONOUS AND HAZARDOUS SUBSTANCE which should be handled by trained staff only.
Handling Advice:	Minimize freezing and thawing.
Storage:	-20 °C
Storage Comment:	Aliquot and store at -20°C, with minimal freeze/thawing. A working aliquot may be refrigerated at 4°C for a few weeks and still remain viable.



Western Blotting

**Image 1.** ABIN571111 (0.1µg/ml) staining of Human (A), Mouse (B) and Rat (C) Brain lysate (35µg protein in RIPA buffer). Primary incubation was 1 hour. Detected by chemiluminescence.