



[Go to Product page](#)

Datasheet for ABIN5711111

RuvC Protein (AA 2-173) (His-SUMO Tag)

1 Image

Overview

Quantity:	100 µg
Target:	RuvC
Protein Characteristics:	AA 2-173
Origin:	E. coli
Source:	Escherichia coli (E. coli)
Protein Type:	Recombinant
Purification tag / Conjugate:	This RuvC protein is labelled with His-SUMO Tag.
Application:	SDS-PAGE (SDS)

Product Details

Sequence:	AIILGIDPGS RVTGYGVIRQ VGRQLSYLGS GCIRTKVDDL PSRLKLIYAG VTEIITQFQP DYFAIEQVFM AKNADSALKL GQARGVAIVA AVNQELPVFE YAARQVKQTV VGIGSAEKSQ VQHMVRTLLK LPANPQADAA DALAIAITHC HVSQNAMQMS ESRLNLARGR LR
-----------	---

Purification:	SDS-PAGE
---------------	----------

Purity:	> 90 %
---------	--------

Target Details

Target:	RuvC
---------	------

Alternative Name:	RUVC (RuvC Products)
-------------------	--

Background:	Nuclease that resolves Holliday junction intermediates in genetic recombination. Cleaves the cruciform structure in supercoiled DNA by nicking to strands with the same polarity at sites
-------------	---

Target Details

symmetrically opposed at the junction in the homologous arms and leaves a 5'-terminal phosphate and a 3'-terminal hydroxyl group.

Molecular Weight: 34.62 kDa

UniProt: [P0A814](#)

Application Details

Application Notes: Optimal working dilution should be determined by the investigator.

Restrictions: For Research Use only

Handling

Format: Liquid

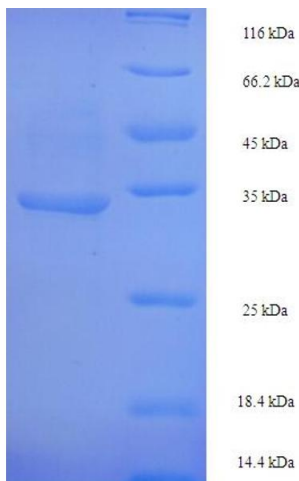
Concentration: 0.1-2 mg/mL

Buffer: 20 mM Tris-HCl based buffer, pH 8.0

Storage: -80 °C, 4 °C, -20 °C

Storage Comment: Store at -20°C, for extended storage, conserve at -20°C or -80°C. Repeated freezing and thawing is not recommended. Store working aliquots at 4°C for up to one week.

Images



SDS-PAGE

Image 1.