

Datasheet for ABIN571117
anti-CHCHD3 antibody (AA 151-164)[Go to Product page](#)

2 Images

Overview

Quantity:	100 µg
Target:	CHCHD3
Binding Specificity:	AA 151-164
Reactivity:	Human
Host:	Goat
Clonality:	Polyclonal
Conjugate:	This CHCHD3 antibody is un-conjugated
Application:	Western Blotting (WB), Immunohistochemistry (IHC), ELISA

Product Details

Purpose:	CHCHD3 (aa151-164)
Immunogen:	Peptide with sequence C-RSSEFYRVTTTEQYQ, from the internal region of the protein sequence according to NP_060282.1.
Sequence:	RSSEFYRVTT EQYQ
Isotype:	IgG
Cross-Reactivity:	Cow, Dog, Human, Mouse, Rat, Sheep
Purification:	Purified from goat serum by ammonium sulphate precipitation followed by antigen affinity chromatography using the immunizing peptide.
Grade:	Verified

Target Details

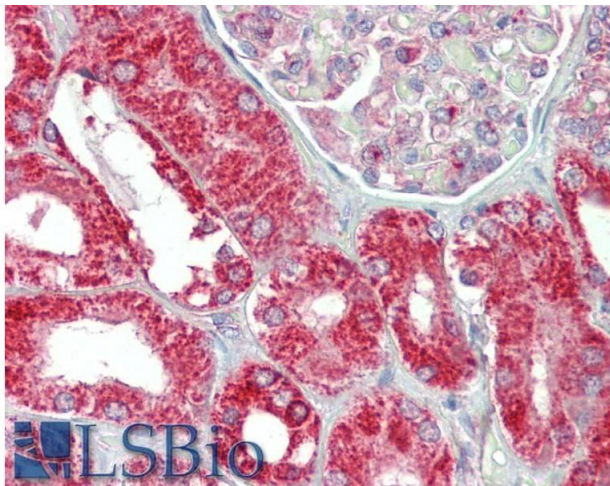
Target:	CHCHD3
Alternative Name:	CHCHD3 (CHCHD3 Products)
Background:	CHCHD3, coiled-coil-helix-coiled-coil-helix domain containing 3, FLJ20420
Gene ID:	54927, 66075, 296966
NCBI Accession:	NP_060282

Application Details

Application Notes:	<p>Immunohistochemistry: Paraffin embedded Human Kidney. Recommended concentration: 5 µg/mL.</p> <p>Western Blot: Approx 26.2 kDa band observed in Human Placenta lysates (calculated MW of 26 kDa according to NP_060282.1). Recommended concentration: 0.3-1 µg/mL. A customer reported ~30 kDa in THP1 and in human primary monocyte derived dendritic cells.</p> <p>Peptide ELISA: antibody detection limit dilution 1:32000.</p>
Comment:	Additional validation: This antibody has been successfully used in the following paper: Sikorski et al. (2018) PMID: 30377371.
Restrictions:	For Research Use only

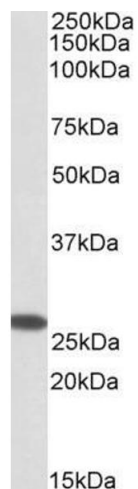
Handling

Format:	Liquid
Concentration:	0.5 mg/mL
Buffer:	Supplied at 0.5 mg/mL in Tris saline, 0.02 % sodium azide, pH 7.3 with 0.5 % bovine serum albumin.
Preservative:	Sodium azide
Precaution of Use:	This product contains Sodium azide: a POISONOUS AND HAZARDOUS SUBSTANCE which should be handled by trained staff only.
Handling Advice:	Minimize freezing and thawing.
Storage:	-20 °C
Storage Comment:	Aliquot and store at -20°C, with minimal freeze/thawing. A working aliquot may be refrigerated at 4°C for a few weeks and still remain viable.



Immunohistochemistry

Image 1. ABIN571117 (5µg/ml) staining of paraffin embedded Human Kidney. Steamed antigen retrieval with citrate buffer pH 6, AP-staining.



Western Blotting

Image 2. ABIN571117 (0.3µg/ml) staining of Human Placenta lysate (35µg protein in RIPA buffer). Primary incubation was 1 hour. Detected by chemiluminescence.