

Datasheet for ABIN571119
anti-MMP12 antibody (Internal Region)



[Go to Product page](#)

1 Image

Overview

Quantity:	100 µg
Target:	MMP12
Binding Specificity:	Internal Region
Reactivity:	Human
Host:	Goat
Clonality:	Polyclonal
Conjugate:	This MMP12 antibody is un-conjugated
Application:	Western Blotting (WB), ELISA

Product Details

Purpose:	MMP12
Immunogen:	Peptide with sequence C-RPKTSVNLISS, from the internal region of the protein sequence according to NP_002417.2.
Sequence:	RPKTSVNLISS
Isotype:	IgG
Cross-Reactivity:	Cow, Dog, Human
Purification:	Purified from goat serum by ammonium sulphate precipitation followed by antigen affinity chromatography using the immunizing peptide.
Grade:	Verified

Target Details

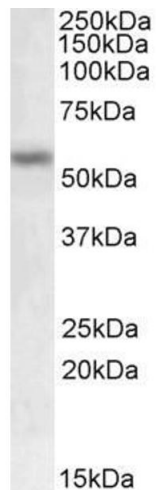
Target:	MMP12
Alternative Name:	MMP12 (MMP12 Products)
Background:	MMP12, matrix metalloproteinase 12 (macrophage elastase), HME, MGC138506, MME, macrophage elastase, macrophage metalloelastase, matrix metalloproteinase 12, matrix metalloproteinase 12 (macrophage elastase)
Gene ID:	4321
NCBI Accession:	NP_002417

Application Details

Application Notes:	Western Blot: Approx 55 kDa band observed in Human Breast Cancer lysates (calculated MW of 54.0 kDa according to NP_002417.2). Recommended concentration: 0.3-1 µg/mL. Peptide ELISA: antibody detection limit dilution 1:4000.
Restrictions:	For Research Use only

Handling

Format:	Liquid
Concentration:	0.5 mg/mL
Buffer:	Supplied at 0.5 mg/mL in Tris saline, 0.02 % sodium azide, pH 7.3 with 0.5 % bovine serum albumin.
Preservative:	Sodium azide
Precaution of Use:	This product contains Sodium azide: a POISONOUS AND HAZARDOUS SUBSTANCE which should be handled by trained staff only.
Handling Advice:	Minimize freezing and thawing.
Storage:	-20 °C
Storage Comment:	Aliquot and store at -20°C, with minimal freeze/thawing. A working aliquot may be refrigerated at 4°C for a few weeks and still remain viable.



Western Blotting

Image 1. ABIN571119 (0.5µg/ml) staining of Human Breast Cancer lysate (35µg protein in RIPA buffer). Primary incubation was 1 hour. Detected by chemiluminescence.