



[Go to Product page](#)

Datasheet for ABIN5711201

## Glycerol Kinase Protein (GK) (AA 1-496, full length) (His tag)

### 1 Image

#### Overview

Quantity:	100 µg
Target:	Glycerol Kinase (GK)
Protein Characteristics:	AA 1-496, full length
Origin:	Thermus thermophilus
Source:	Escherichia coli (E. coli)
Protein Type:	Recombinant
Purification tag / Conjugate:	This Glycerol Kinase protein is labelled with His tag.
Application:	SDS-PAGE (SDS)

#### Product Details

Sequence:	MNQYMLAIDQ GTTSSRAILF NQKGEIVHMA QKEFTQYFPQ PGWVEHNANE IWGSVLAVIA SVLSEAQVKP EQVAGIGITN QRETTVVWEK DTGNPIYNAI VWQSRQTAGI CDELKAKGYD PLFRKKTGLL IDAYFSGTKV KWILDHVDGA RERAERGELL FGTIDTWLIW KLSGGRVHVT DYSNASRTL M FNIHTLEWDD ELLDILGVPK AMLPEVRPSS EVYAKTAPYH FFGVEVPIAG AAGDQQAALF GQACFTEGMA KNTYGTGCFM LMNTGEKAVA SKHGLLTTIA WGIDGKVEYA LEGSIFVAGS AIQWLRDGLR MIKTAADSET YAEKVESTDG VYVPAFIGL GTPYWDSEVR GAVFGLTRGT TKEHFIRATL ESLAYQTKDV LAVMEADSGI SLTTLRVDGG AVKNNFLMQF QSDLLAVPVE RPVVNETTAL GAAYLAGLAV GYWNSRDDIA AQWQLERRFE PKMDDDKRTM LYDGWKKAVR AAMAFK
Purification:	SDS-PAGE
Purity:	> 90 %

## Target Details

Target:	Glycerol Kinase (GK)
Alternative Name:	GLPK ( <a href="#">GK Products</a> )
Background:	Key enzyme in the regulation of glycerol uptake and metabolism. Catalyzes the phosphorylation of glycerol to yield sn-glycerol 3-phosphate.
Molecular Weight:	58.9 kDa
UniProt:	<a href="#">O66131</a>

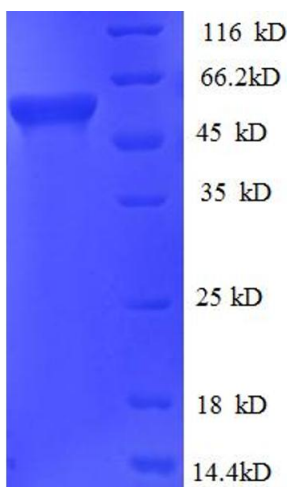
## Application Details

Application Notes:	Optimal working dilution should be determined by the investigator.
Restrictions:	For Research Use only

## Handling

Format:	Liquid
Concentration:	0.1-2 mg/mL
Buffer:	20 mM Tris-HCl based buffer, pH 8.0
Storage:	-80 °C, 4 °C, -20 °C
Storage Comment:	Store at -20°C, for extended storage, conserve at -20°C or -80°C. Repeated freezing and thawing is not recommended. Store working aliquots at 4°C for up to one week.

## Images



### SDS-PAGE

Image 1.