



[Go to Product page](#)

Datasheet for ABIN5711249

## ICT1 Protein (AA 30-206) (His-SUMO Tag)

### 1 Image

#### Overview

Quantity:	100 µg
Target:	ICT1
Protein Characteristics:	AA 30-206
Origin:	Human
Source:	Escherichia coli (E. coli)
Protein Type:	Recombinant
Purification tag / Conjugate:	This ICT1 protein is labelled with His-SUMO Tag.
Application:	SDS-PAGE (SDS)

#### Product Details

Sequence:	LHKQKDGTEF KSIYSLDKLY PESQGSdTAW RVPNGAKQAD SDIPLDRLTI SYCRSSGPGG QNVNKNVNSKA EVRFHLATAE WIAEPVRQKI AITHKNKINR LGELILTSES SRYQFRNLAD CLQKIRDMIT EASQTPKEPT KEDVKLHRIR IENMNRERLR QKRIHSAVKT SRRVDMD
Purification:	SDS-PAGE
Purity:	> 90 %

#### Target Details

Target:	ICT1
Alternative Name:	ICT1 ( <a href="#">ICT1 Products</a> )
Background:	Essential peptidyl-tRNA hydrolase component of the mitochondrial large ribosomal subunit. Acts as a codon-independent translation release factor that has lost all stop codon specificity

## Target Details

and directs the termination of translation in mitochondrion, possibly in case of abortive elongation. May be involved in the hydrolysis of peptidyl-tRNAs that have been prematurely terminated and thus in the recycling of stalled mitochondrial ribosomes.

Molecular Weight: 36.4 kDa

UniProt: [Q14197](#)

## Application Details

Application Notes: Optimal working dilution should be determined by the investigator.

Restrictions: For Research Use only

## Handling

Format: Liquid

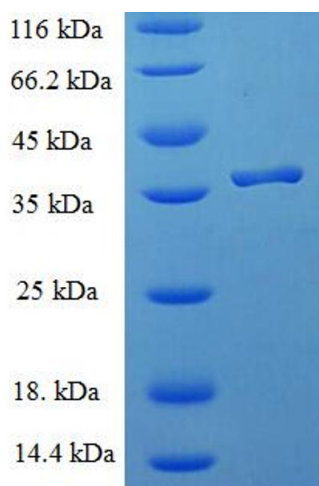
Concentration: 0.1-2 mg/mL

Buffer: 20 mM Tris-HCl based buffer, pH 8.0

Storage: -80 °C, 4 °C, -20 °C

Storage Comment: Store at -20°C, for extended storage, conserve at -20°C or -80°C. Repeated freezing and thawing is not recommended. Store working aliquots at 4°C for up to one week.

## Images



### SDS-PAGE

Image 1.