



[Go to Product page](#)

Datasheet for ABIN5711285

## MAD2L1 Protein (AA 2-205) (His-SUMO Tag)

### 1 Image

#### Overview

Quantity:	100 µg
Target:	MAD2L1
Protein Characteristics:	AA 2-205
Origin:	Human
Source:	Escherichia coli (E. coli)
Protein Type:	Recombinant
Purification tag / Conjugate:	This MAD2L1 protein is labelled with His-SUMO Tag.
Application:	SDS-PAGE (SDS)

#### Product Details

Sequence:	ALQLSREQGI TLRGSAEIVA EFFSFGINSI LYQRGIYPSE TFTRVQKYGL TLLVTTDLEL IKYLNNVVEQ LKDWLYKCSV QKLWVISNI ESDEVLERWQ FDIECDKTAK DDSAPREKSQ KAIQDEIRSV IRQITATVTF LPLLEVSCSF DLLIYTDKDL VVPEKWEEESG PQFITNSEEV RLRSFTTTIH KVNSMVAYKI PVND
Purification:	SDS-PAGE
Purity:	> 90 %

#### Target Details

Target:	MAD2L1
Alternative Name:	MD2L1 ( <a href="#">MAD2L1 Products</a> )
Background:	Component of the spindle-assbly checkpoint that prevents the onset of anaphase until all

## Target Details

chromosomes are properly aligned at the metaphase plate. Required for the execution of the mitotic checkpoint which monitors the process of kinetochore-spindle attachment and inhibits the activity of the anaphase promoting complex by sequestering CDC20 until all chromosomes are aligned at the metaphase plate.

Molecular Weight: 39.36 kDa

UniProt: [Q13257](#)

## Application Details

Application Notes: Optimal working dilution should be determined by the investigator.

Restrictions: For Research Use only

## Handling

Format: Liquid

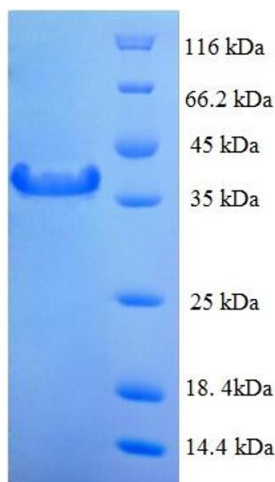
Concentration: 0.1-2 mg/mL

Buffer: 20 mM Tris-HCl based buffer, pH 8.0

Storage: -80 °C, 4 °C, -20 °C

Storage Comment: Store at -20°C, for extended storage, conserve at -20°C or -80°C. Repeated freezing and thawing is not recommended. Store working aliquots at 4°C for up to one week.

## Images



### SDS-PAGE

Image 1.