

Datasheet for ABIN571130
anti-LSP1 antibody (C-Term)

3 Images

[Go to Product page](#)

Overview

| | |
|----------------------|--|
| Quantity: | 100 µg |
| Target: | LSP1 |
| Binding Specificity: | C-Term |
| Reactivity: | Human, Mouse |
| Host: | Goat |
| Clonality: | Polyclonal |
| Conjugate: | This LSP1 antibody is un-conjugated |
| Application: | Western Blotting (WB), ELISA, Immunohistochemistry (IHC) |

Product Details

| | |
|-------------------|--|
| Purpose: | LSP1 |
| Immunogen: | Peptide with sequence C-RYKFVATGHGKYEKV, from the C Terminus of the protein sequence according to NP_002330.1, NP_001013271.1. |
| Sequence: | RYKFVATGHG KYEKV |
| Isotype: | IgG |
| Specificity: | This antibody is expected to recognize both reported isoforms (NP_002330.1, NP_001013271.1). Reported variants represent identical protein: NP_001013273.1, NP_001013271.1, NP_001013272.1 |
| Cross-Reactivity: | Cow, Dog, Human, Mouse, Rat |
| Purification: | Purified from goat serum by ammonium sulphate precipitation followed by antigen affinity |

Product Details

chromatography using the immunizing peptide.

Grade: Verified

Target Details

Target: LSP1

Alternative Name: LSP1 ([LSP1 Products](#))

Background: LSP1, lymphocyte-specific protein 1, WP34, pp52, 47 kDa actin binding protein, 52 kDa phosphoprotein, F-actin binding and cytoskeleton associated protein, leufactin (leukocyte F-actin binding protein), leukocyte-specific protein 1, lymphocyte-specific ant

Gene ID: 4046, 16331, 54259

NCBI Accession: [NP_002330](#), [NP_001013271](#)

Application Details

Application Notes: Immunohistochemistry: Paraffin embedded Colon, MALT. Recommended concentration: 3.75 µg/mL.
Western Blot: Approx 50 kDa band observed in Human Peripheral Blood Mononucleocytes, (PBMs) and Tonsil lysates and in lysates of cell line Daudi, and approx. 50-55 kDa in Human Tonsil and Mouse Spleen lysates (calculated MW of 37.2 kDa according to Human NP
Peptide ELISA: antibody detection limit dilution 1:16000.

Restrictions: For Research Use only

Handling

Format: Liquid

Concentration: 0.5 mg/mL

Buffer: Supplied at 0.5 mg/mL in Tris saline, 0.02 % sodium azide, pH 7.3 with 0.5 % bovine serum albumin.

Preservative: Sodium azide

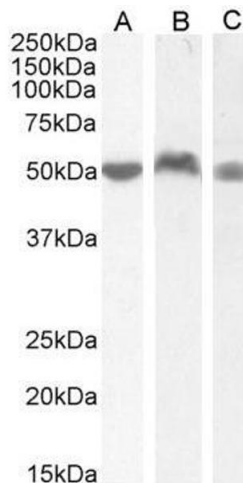
Precaution of Use: This product contains Sodium azide: a POISONOUS AND HAZARDOUS SUBSTANCE which should be handled by trained staff only.

Handling Advice: Minimize freezing and thawing.

Handling

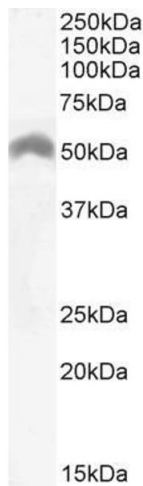
| | |
|------------------|--|
| Storage: | -20 °C |
| Storage Comment: | Aliquot and store at -20°C, with minimal freeze/thawing. A working aliquot may be refrigerated at 4°C for a few weeks and still remain viable. |

Images



Western Blotting

Image 1. ABIN571130 (0.05µg/ml) staining of Human PBM (A), (0.03ug/ml) Lymph Node (B) and Tonsil (C) lysate (35µg protein in RIPA buffer). Detected by chemiluminescence.



Western Blotting

Image 2. ABIN571130 (0.03µg/ml) staining of Daudi cell ysate (35µg protein in RIPA buffer). Detected by chemiluminescence.



Western Blotting

Image 3. ABIN571130 (0.01µg/ml) staining of Mouse Spleen lysate (35µg protein in RIPA buffer). Detected by chemiluminescence.