



[Go to Product page](#)

Datasheet for ABIN5711307

COTL1 Protein (AA 2-142) (His-SUMO Tag)

1 Image

Overview

Quantity:	100 µg
Target:	COTL1
Protein Characteristics:	AA 2-142
Origin:	Human
Source:	Escherichia coli (E. coli)
Protein Type:	Recombinant
Purification tag / Conjugate:	This COTL1 protein is labelled with His-SUMO Tag.
Application:	SDS-PAGE (SDS)

Product Details

Sequence:	ATKIDKEACR AAYNLVRDDG SAVIWVTFKY DGSTIVPGEQ GAEQHFIIQQ CTDDVRLFAF VRFTTGDAMS KRSKFALITW IGENVSLQR AKTGTDKTLV KEVVQNFAKE FVISDRKELE EDFIKSELKK AGGANYDAQT E
Purification:	SDS-PAGE
Purity:	> 90 %

Target Details

Target:	COTL1
Alternative Name:	COTL1 (COTL1 Products)
Background:	Binds to F-actin in a calcium-independent manner. Has no direct effect on actin depolymerization. Acts as a chaperone for ALOX5 (5LO), influencing both its stability and

Target Details

activity in leukotrienes synthesis.

Molecular Weight: 31.8 kDa

UniProt: [Q14019](#)

Application Details

Application Notes: Optimal working dilution should be determined by the investigator.

Restrictions: For Research Use only

Handling

Format: Liquid

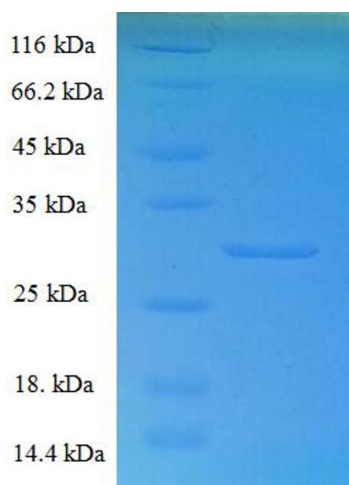
Concentration: 0.1-2 mg/mL

Buffer: 20 mM Tris-HCl based buffer, pH 8.0

Storage: -80 °C, 4 °C, -20 °C

Storage Comment: Store at -20°C, for extended storage, conserve at -20°C or -80°C. Repeated freezing and thawing is not recommended. Store working aliquots at 4°C for up to one week.

Images



SDS-PAGE

Image 1.