

Datasheet for ABIN571131  
**anti-AIM2 antibody (C-Term)**[Go to Product page](#)

## 2 Images

## Overview

|                      |  |
|----------------------|--|
| Quantity:            | 100 µg   |
| Target:              | AIM2   |
| Binding Specificity: | C-Term   |
| Reactivity:          | Human  |
| Host:                | Goat   |
| Clonality:           | Polyclonal   |
| Conjugate:           | This AIM2 antibody is un-conjugated  |
| Application:         | Western Blotting (WB), ELISA, Immunohistochemistry (IHC), Immunofluorescence (IF), Flow Cytometry (FACS) |

## Product Details

|                   |   |
|-------------------|---|
| Purpose:          | AIM2  |
| Immunogen:        | Peptide with sequence C-GEKLQLTSGVHSTIK, from the C Terminus of the protein sequence according to NP_004824.1.                        |
| Sequence:         | GEKLQLTSGV HSTIK  |
| Isotype:          | IgG   |
| Cross-Reactivity: | Human   |
| Purification:     | Purified from goat serum by ammonium sulphate precipitation followed by antigen affinity chromatography using the immunizing peptide. |
| Grade:            | Verified  |

## Target Details

|                   |   |
|-------------------|---|
| Target:           | AIM2  |
| Alternative Name: | AIM2 ( <a href="#">AIM2 Products</a> )  |
| Background:       | AIM2, absent in melanoma 2, PYHIN4  |
| Molecular Weight: | 39.0kDa   |
| Gene ID:          | 9447  |
| NCBI Accession:   | <a href="#">NP_004824</a>   |
| Pathways:         | <a href="#">Activation of Innate immune Response</a> , <a href="#">Positive Regulation of Endopeptidase Activity</a> , <a href="#">Inflammasome</a> |

## Application Details

|                    |  |
|--------------------|--|
| Application Notes: | <p>Immunohistochemistry: In paraffin embedded Human Spleen shows nucleolar staining in some splenocytes. Recommended concentration: 4-6 µg/mL.</p> <p>Western Blot: Approx 37 kDa band observed in lysates of cell line HeLa (calculated MW of 39.0 kDa according to Human NP_004824.1). Recommended concentration: 0.5-1 µg/mL.</p> <p>Primary incubation 1 hour at room temperature.</p> <p>Peptide ELISA: antibody detection limit dilution 1:8000.</p> |
| Comment:           | <p><b>Immunofluorescence:</b> Strong expression of the protein seen in U2OS and HeLa cells.</p> <p>Recommended concentration: 10µg/ml.</p> <p><b>Flow Cytometry:</b> Flow cytometric analysis of HeLa cells. Recommended concentration: 10ug/ml.</p>   |
| Restrictions:      | For Research Use only  |

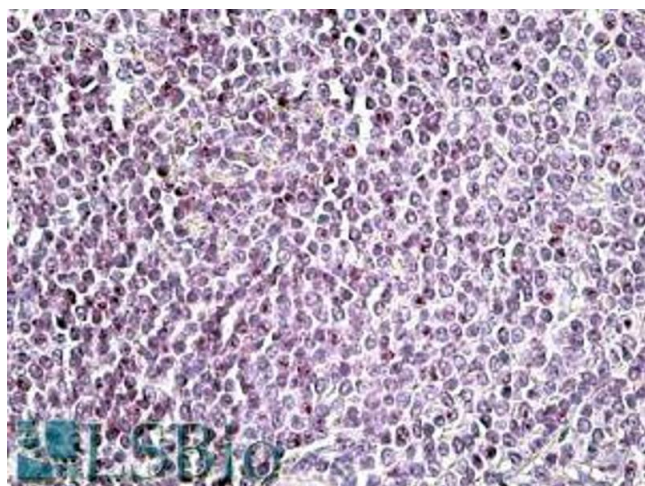
## Handling

|                    |  |
|--------------------|--|
| Format:            | Liquid   |
| Concentration:     | 0.5 mg/mL  |
| Buffer:            | Supplied at 0.5 mg/mL in Tris saline, 0.02 % sodium azide, pH 7.3 with 0.5 % bovine serum albumin.                     |
| Preservative:      | Sodium azide   |
| Precaution of Use: | This product contains Sodium azide: a POISONOUS AND HAZARDOUS SUBSTANCE which should be handled by trained staff only. |

## Handling

|                  |  |
|------------------|--|
| Handling Advice: | Minimize freezing and thawing.   |
| Storage:         | -20 °C   |
| Storage Comment: | Aliquot and store at -20°C, with minimal freeze/thawing. A working aliquot may be refrigerated at 4°C for a few weeks and still remain viable. |

## Images



### Immunohistochemistry

**Image 1.** ABIN571131 (3.8µg/ml) staining of paraffin embedded Human Spleen. Steamed antigen retrieval with citrate buffer pH 6, AP-staining.

110kDa  
75KDa  
50kDa



### Western Blotting

**Image 2.** ABIN571131 (1µg/ml) staining of IFNbeta-treated WI-38 lysate (35µg protein in RIPA buffer). Primary incubation was 1 hour. Detected by chemiluminescence.