

Datasheet for ABIN571133
anti-c-Rel antibody (Internal Region)

2 Images

[Go to Product page](#)

Overview

Quantity:	100 µg
Target:	c-Rel
Binding Specificity:	Internal Region
Reactivity:	Human
Host:	Goat
Clonality:	Polyclonal
Conjugate:	This c-Rel antibody is un-conjugated
Application:	Western Blotting (WB), ELISA, Immunohistochemistry (IHC)

Product Details

Purpose:	REL
Immunogen:	Peptide with sequence NDLNASNACIYN, from the internal region of the protein sequence according to NP_002899.1.
Sequence:	NDLNASNACI YN
Isotype:	IgG
Cross-Reactivity:	Human
Purification:	Purified from goat serum by ammonium sulphate precipitation followed by antigen affinity chromatography using the immunizing peptide.
Grade:	Verified

Target Details

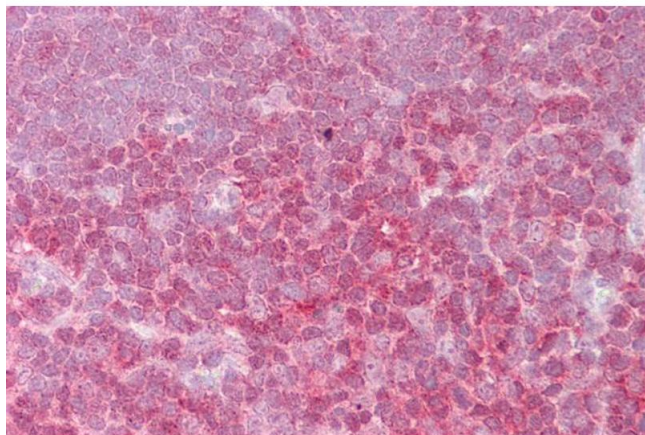
Target:	c-Rel
Alternative Name:	REL (c-Rel Products)
Background:	REL, v-rel reticuloendotheliosis viral oncogene homolog (avian), C-Rel, C-Rel proto-oncogene protein, oncogene REL, avian reticuloendotheliosis, v-rel avian reticuloendotheliosis viral oncogene homolog, v-rel reticuloendotheliosis viral oncogene homolog
Gene ID:	5966
NCBI Accession:	NP_002899

Application Details

Application Notes:	Immunohistochemistry: Paraffin embedded Human Thymus. Recommended concentration: 2.5 µg/mL. Western Blot: Approx 70 kDa band observed in Human Spleen and Human Peripheral Blood Mononucleocytes lysates (calculated MW of 68.5 kDa according to NP_002899.1). Recommended concentration: 0.5-2 µg/mL. Primary incubation was 1 hour. Peptide ELISA: antibody detection limit dilution 1:16000.
Restrictions:	For Research Use only

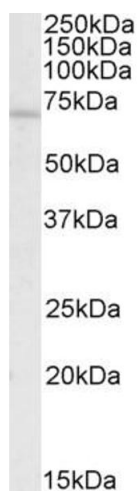
Handling

Format:	Liquid
Concentration:	0.5 mg/mL
Buffer:	Supplied at 0.5 mg/mL in Tris saline, 0.02 % sodium azide, pH 7.3 with 0.5 % bovine serum albumin.
Preservative:	Sodium azide
Precaution of Use:	This product contains Sodium azide: a POISONOUS AND HAZARDOUS SUBSTANCE which should be handled by trained staff only.
Handling Advice:	Minimize freezing and thawing.
Storage:	-20 °C
Storage Comment:	Aliquot and store at -20°C, with minimal freeze/thawing. A working aliquot may be refrigerated at 4°C for a few weeks and still remain viable.



Immunohistochemistry

Image 1. ABIN571134 (2.5µg/ml) staining of paraffin embedded Human Thymus. Steamed antigen retrieval with citrate buffer pH 6, AP-staining.



Western Blotting

Image 2. ABIN571133 (0.5µg/ml) staining of Human Spleen lysate (35µg protein in RIPA buffer). Detected by chemiluminescence.