



[Go to Product page](#)

Datasheet for ABIN5711347

ESRG Protein (AA 1-222, full length) (His tag)

1 Image

Overview

Quantity:	100 µg
Target:	ESRG
Protein Characteristics:	full length, AA 1-222
Origin:	Human
Source:	Escherichia coli (E. coli)
Protein Type:	Recombinant
Purification tag / Conjugate:	This ESRG protein is labelled with His tag.
Application:	SDS-PAGE (SDS)

Product Details

Sequence:	LTLFSDSARL HPGEINSLVA HTKPVWWSLH TDAHEIWCRD SDRGTSGLGRS IPCPPALCSV RKIHLRPQVL RPTSPRNISP ISNPVSGFLF LCSPTSLTIP QPLSPFNLGA TLQSLPSLNF NSFHSLVETK ETCFIREPKT PAPVTDWEGS LPLVFNHCRD ASLISFRFRPR RDACLGPSPL AASPAFLGQG QVPLNPFST LSGKSRFSGA GASTPQPLLL HP
Purification:	SDS-PAGE
Purity:	> 90 %

Target Details

Target:	ESRG
Alternative Name:	ESRG (ESRG Products)
Molecular Weight:	28.25 kDa

Target Details

UniProt: [Q1W209](#)

Application Details

Application Notes: Optimal working dilution should be determined by the investigator.

Restrictions: For Research Use only

Handling

Format: Liquid

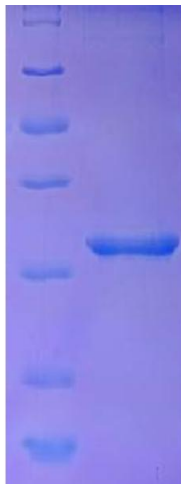
Concentration: 0.1-2 mg/mL

Buffer: 20 mM Tris-HCl based buffer, pH 8.0

Storage: -80 °C, 4 °C, -20 °C

Storage Comment: Store at -20°C, for extended storage, conserve at -20°C or -80°C. Repeated freezing and thawing is not recommended. Store working aliquots at 4°C for up to one week.

Images



SDS-PAGE

Image 1.