

Datasheet for ABIN5711389

Caprin-1 Protein (AA 2-707) (His-SUMO Tag)



[Go to Product page](#)

1 Image

Overview

Quantity:	100 µg
Target:	Caprin-1
Protein Characteristics:	AA 2-707
Origin:	Rat
Source:	Escherichia coli (E. coli)
Protein Type:	Recombinant
Purification tag / Conjugate:	This Caprin-1 protein is labelled with His-SUMO Tag.
Application:	SDS-PAGE (SDS)

Product Details

Sequence: PSATSHSGSG SKSSGPPPPS GSSGSEAAAG AAAPASQHPA TGTGAVQTEA MKQILGVIDK
KLRNLEKKKG KLDDYQERMN KGERLNQDQL DAVSKYQEVN NNLEFAKELQ RSMALSQDI
QKTIKKTARR EQLMREEAEQ KRLKTVLELQ YVLDKLGDDD VRTDLKQGLS GVPILSEEL
SLLDEFYKLV DPERDMSLRL NEQYEHASIH LWDLLEGKEK PVCGTTYKAL KEIVERVFQS
NYFDSTHNLQ NGLCEEEEEAA SAPIVEDQVA EAEPEPTEEY TEQSEVESTE YVNRQFMAET
QFSSGEKEQV DEWAVETVEV VNSLQQQPQA ASPSVPEPHS LTPVAQSDPL VRRQRVQDLM
AQMGGPYNFI QDSMLDFENQ TLDPAIVSAQ PMNPTQNMDM PQLVCPQVHS ESRLAQSNNQ
PVQPEATQVP LVSSTSEGYT ASQPLYQPSH AAEQRPQKEP IDQIQATISL NTEQTTASSS
LPAASQPQVF QAGASKPLHS SGINVNAAPF QSMQTVFNMN APVPPVNEPE TLKQQSQYQA
SYNQSFSSQP HQVEQTELQ DQLQTVVGTY HGSQDQPHQV PGNHQQPPQQ STGFPRSSQP
YYNSRGVSRG GSRGARGLMN GYRGPANGFR GGYDGYRSSF SNTPNNGYTQ SQFNAPRDYS
GYQRDGYQQN FKRGSQSGP RGAPRGRGGP PRPNRGMPQM NTQQVN

Product Details

Purification: SDS-PAGE

Purity: > 90 %

Target Details

Target: Caprin-1

Alternative Name: CAPR1 ([Caprin-1 Products](#))

Background: May regulate the transport and translation of mRNAs of proteins involved in synaptic plasticity in neurons and cell proliferation and migration in multiple cell types.

Molecular Weight: 93.9 kDa

UniProt: [Q5M9G3](#)

Application Details

Application Notes: Optimal working dilution should be determined by the investigator.

Restrictions: For Research Use only

Handling

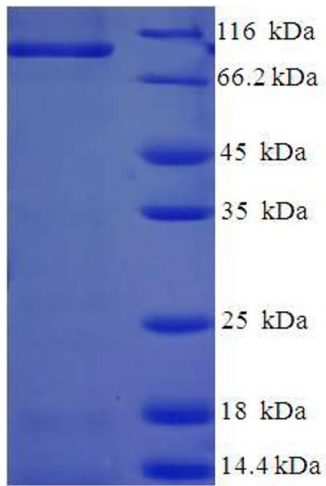
Format: Liquid

Concentration: 0.1-2 mg/mL

Buffer: 20 mM Tris-HCl based buffer, pH 8.0

Storage: -80 °C, 4 °C, -20 °C

Storage Comment: Store at -20°C, for extended storage, conserve at -20°C or -80°C. Repeated freezing and thawing is not recommended. Store working aliquots at 4°C for up to one week.



SDS-PAGE

Image 1.