

Datasheet for ABIN571140
anti-DCUN1D1 antibody (C-Term)



[Go to Product page](#)

1 Image

Overview

Quantity:	100 µg
Target:	DCUN1D1
Binding Specificity:	C-Term
Reactivity:	Human
Host:	Goat
Clonality:	Polyclonal
Conjugate:	This DCUN1D1 antibody is un-conjugated
Application:	ELISA, Western Blotting (WB), Immunohistochemistry (IHC)

Product Details

Purpose:	DCUN1D1
Immunogen:	Peptide with sequence C-RPQIAGTKSTT, from the C Terminus of the protein sequence according to NP_065691.2.
Sequence:	RPQIAGTKST T
Isotype:	IgG
Cross-Reactivity:	Cow, Human, Mouse
Purification:	Purified from goat serum by ammonium sulphate precipitation followed by antigen affinity chromatography using the immunizing peptide.
Grade:	Verified

Target Details

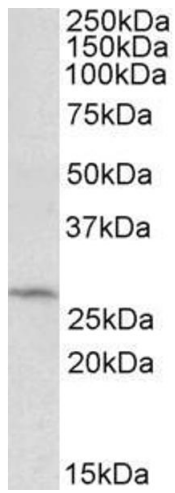
Target:	DCUN1D1
Alternative Name:	DCUN1D1 (DCUN1D1 Products)
Background:	DCUN1D1, DCN1, defective in cullin neddylation 1, domain containing 1 (<i>S. cerevisiae</i>), DCUN1L1, RP42, SCCRO, SCRO, Tes3, RP42 homolog, squamous cell carcinoma-related oncogene
Gene ID:	54165, 114893
NCBI Accession:	NP_065691

Application Details

Application Notes:	<p>Immunohistochemistry: In paraffin embedded Human Kidney shows pixulated staining in the cytoplasm of epithelial cells of PCT, but heavy cytoplasm staining in the epithelial cells of the DCT. Recommended concentration, 5-10 µg/mL.</p> <p>Western Blot: Approx 28 kDa band observed in HepG2 lysates (calculated MW of 30.1 kDa according to NP_065691.2). Recommended concentration: 0.3-1 µg/mL.</p> <p>Peptide ELISA: antibody detection limit dilution 1:16000.</p>
Restrictions:	For Research Use only

Handling

Format:	Liquid
Concentration:	0.5 mg/mL
Buffer:	Supplied at 0.5 mg/mL in Tris saline, 0.02 % sodium azide, pH 7.3 with 0.5 % bovine serum albumin.
Preservative:	Sodium azide
Precaution of Use:	This product contains Sodium azide: a POISONOUS AND HAZARDOUS SUBSTANCE which should be handled by trained staff only.
Handling Advice:	Minimize freezing and thawing.
Storage:	-20 °C
Storage Comment:	Aliquot and store at -20°C, with minimal freeze/thawing. A working aliquot may be refrigerated at 4°C for a few weeks and still remain viable.



Western Blotting

Image 1. ABIN571140 (0.5µg/ml) staining of HepG2 lysate (35µg protein in RIPA buffer). Primary incubation was 1 hour. Detected by chemiluminescence.