

Datasheet for ABIN5711409

FAM160B1 Protein (AA 1-738, Isoform 2) (His-SUMO Tag)



[Go to Product page](#)

1 Image

Overview

Quantity:	100 µg
Target:	FAM160B1
Protein Characteristics:	Isoform 2, AA 1-738
Origin:	Human
Source:	Escherichia coli (E. coli)
Protein Type:	Recombinant
Purification tag / Conjugate:	This FAM160B1 protein is labelled with His-SUMO Tag.
Application:	SDS-PAGE (SDS)

Product Details

Sequence:	<p>MFSKFTSILQ HAVEALAPSL PLQEDFVYHW KAITHYYIET SDDKAPVTD T NIPSHLEQML DILVQEENER ESGETGPCME YLLHHKILET LYTLGKADCP PGMKQQVLVF YTKLLGRIRQ PLLPHINVHR PVQKLIRLCG EVLATPTENE EIQLFCIVCA KLKQDPYLVN FFLENKMKSL ASKGVPNVIS EDTLKGQDSL STDTGQSRQP EELSGATGME QTELEDEPPH QMDHLSTSLD NLSVTSLEPEA SVVCPNQDYN LVNSLLNLTR SPDGRIAVKA CEGLMLLVSL PEPAAAKCLT QSTCLCELLT DRLASLYKAL PQSVDPLDIE TVEAINWGLD SYSHKEDASA FPGKRALISF LSWFDYCDQL IKEAQKTA AV ALAKAVHERF FIGVMEPQLM QTSEMGIIITS TALLHRIVRQ VTSDVLLQEM VFFILGEQRE PETLAEISRH PLRHR LIEHC DHISDEISIM TLRMFEHLLQ KPNEHILYNL VLRNLEERNY TEYKPLCPED KDVVENGLIA GAVDLEEDPL FTDISPENTL PNQEWLSSSP PATPDHPKND GKTEVHKIVN SFLCLVPDDA KSSYHVEGTG YDTYL RDAHR QFRDYCAICL RWEWPGSPKA LEKCNLEAAF FEGHFLKVLV DRMGRILDQP YDVNLQVTSV LSRSLFPHP HIHEYLLDPY VNLAPGCRSL FSVIVRVVGD LMLRIQRIQD FTPKLLLV RK</p>
-----------	---

Product Details

RLLGLEPEGP MQTLPSWW

Purification: SDS-PAGE

Purity: > 90 %

Target Details

Target: FAM160B1

Alternative Name: F16B1 ([FAM160B1 Products](#))

Molecular Weight: 99.7 kDa

UniProt: [Q5W0V3](#)

Application Details

Application Notes: Optimal working dilution should be determined by the investigator.

Restrictions: For Research Use only

Handling

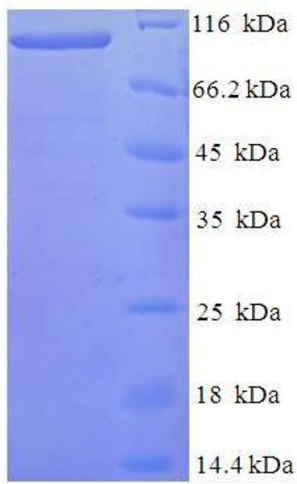
Format: Liquid

Concentration: 0.1-2 mg/mL

Buffer: 20 mM Tris-HCl based buffer, pH 8.0

Storage: -80 °C, 4 °C, -20 °C

Storage Comment: Store at -20°C, for extended storage, conserve at -20°C or -80°C. Repeated freezing and thawing is not recommended. Store working aliquots at 4°C for up to one week.



SDS-PAGE

Image 1.