

Datasheet for ABIN571142
anti-BST2 antibody (Internal Region)[Go to Product page](#)

1 Image

Overview

Quantity:	100 µg
Target:	BST2
Binding Specificity:	Internal Region
Reactivity:	Human
Host:	Goat
Clonality:	Polyclonal
Conjugate:	This BST2 antibody is un-conjugated
Application:	Western Blotting (WB), ELISA

Product Details

Purpose:	Tetherin / CD317
Immunogen:	Peptide with sequence C-ELTEAQKGFQD, from the internal region of the protein sequence according to NP_004326.1.
Sequence:	ELTEAQKGFQ D
Isotype:	IgG
Cross-Reactivity:	Human
Purification:	Purified from goat serum by ammonium sulphate precipitation followed by antigen affinity chromatography using the immunizing peptide.
Grade:	Verified

Target Details

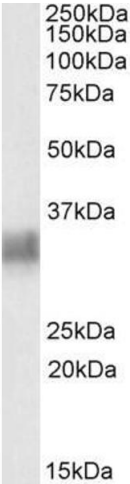
Target:	BST2
Alternative Name:	BST2 (BST2 Products)
Background:	BST2, bone marrow stromal cell antigen 2, CD317, tetherin
Gene ID:	684
NCBI Accession:	NP_004326
Pathways:	Regulation of Leukocyte Mediated Immunity , Production of Molecular Mediator of Immune Response

Application Details

Application Notes:	Western Blot: Approx 30 kDa band observed in Human Spleen and Testis lysates (calculated MW of 19.8 kDa according to NP_004326.1). The observed molecular weight corresponds to earlier findings in literature with different antibodies (Rollason, J Cell Sci. Peptide ELISA: antibody detection limit dilution 1:32000.
Restrictions:	For Research Use only

Handling

Format:	Liquid
Concentration:	0.5 mg/mL
Buffer:	Supplied at 0.5 mg/mL in Tris saline, 0.02 % sodium azide, pH 7.3 with 0.5 % bovine serum albumin.
Preservative:	Sodium azide
Precaution of Use:	This product contains Sodium azide: a POISONOUS AND HAZARDOUS SUBSTANCE which should be handled by trained staff only.
Handling Advice:	Minimize freezing and thawing.
Storage:	-20 °C
Storage Comment:	Aliquot and store at -20°C, with minimal freeze/thawing. A working aliquot may be refrigerated at 4°C for a few weeks and still remain viable.



Western Blotting

Image 1. ABIN571142 (0.3µg/ml) staining of Human Spleen lysate (35µg protein in RIPA buffer). Primary incubation was 1 hour. Detected by chemiluminescence.