



[Go to Product page](#)

Datasheet for ABIN571145
anti-NPC2 antibody (Internal Region)

1 Image

Overview

Quantity:	100 µg
Target:	NPC2
Binding Specificity:	Internal Region
Reactivity:	Human
Host:	Goat
Clonality:	Polyclonal
Conjugate:	This NPC2 antibody is un-conjugated
Application:	ELISA, Western Blotting (WB)

Product Details

Purpose:	NPC2
Immunogen:	Peptide with sequence QAEPVQFKDCGSVD, from the internal region of the protein sequence according to NP_006423.1.
Sequence:	QAEPVQFKDC GSVD
Isotype:	IgG
Cross-Reactivity:	Human
Purification:	Purified from goat serum by ammonium sulphate precipitation followed by antigen affinity chromatography using the immunizing peptide.
Grade:	Verified

Target Details

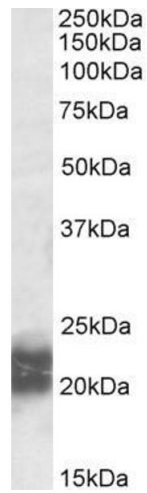
Target:	NPC2
Alternative Name:	NPC2 (NPC2 Products)
Background:	NPC2, Niemann-Pick disease, type C2, EDDM1, HE1, MGC1333, NP-C2, epididymal protein 1, epididymal secretory protein, epididymal secretory protein E1, tissue-specific secretory protein
Gene ID:	10577
NCBI Accession:	NP_006423
Pathways:	SARS-CoV-2 Protein Interactome

Application Details

Application Notes:	Western Blot: Experiments gave bands at approx 20 kDa and 23 kDa in Human Testis lysates. These bands correspond to earlier findings in literature with different antibodies (Légaré et al, Mol Hum Reprod. 2006 Jul,12(7):461-8, PMID: 16772431. This protein Peptide ELISA: antibody detection limit dilution 1:2000.
Restrictions:	For Research Use only

Handling

Format:	Liquid
Concentration:	0.5 mg/mL
Buffer:	Supplied at 0.5 mg/mL in Tris saline, 0.02 % sodium azide, pH 7.3 with 0.5 % bovine serum albumin.
Preservative:	Sodium azide
Precaution of Use:	This product contains Sodium azide: a POISONOUS AND HAZARDOUS SUBSTANCE which should be handled by trained staff only.
Handling Advice:	Minimize freezing and thawing.
Storage:	-20 °C
Storage Comment:	Aliquot and store at -20°C, with minimal freeze/thawing. A working aliquot may be refrigerated at 4°C for a few weeks and still remain viable.



Western Blotting

Image 1. ABIN571145 (0.5µg/ml) staining of Human Testis lysate (35µg protein in RIPA buffer). Primary incubation was 1 hour. Detected by chemiluminescence.