

Datasheet for ABIN571149
anti-WFDC2 antibody (AA 29-43)[Go to Product page](#)

2 Images

Overview

Quantity:	100 µg
Target:	WFDC2
Binding Specificity:	AA 29-43
Reactivity:	Human
Host:	Goat
Clonality:	Polyclonal
Conjugate:	This WFDC2 antibody is un-conjugated
Application:	ELISA, Western Blotting (WB)

Product Details

Purpose:	WFDC2 (aa29-43)
Immunogen:	Peptide with sequence GAEKTGVCPELQADQ, from the internal region of the protein sequence according to NP_006094.3.
Sequence:	GAEKTGVCPE LQADQ
Isotype:	IgG
Cross-Reactivity:	Dog, Human
Purification:	Purified from goat serum by ammonium sulphate precipitation followed by antigen affinity chromatography using the immunizing peptide.
Grade:	Verified

Target Details

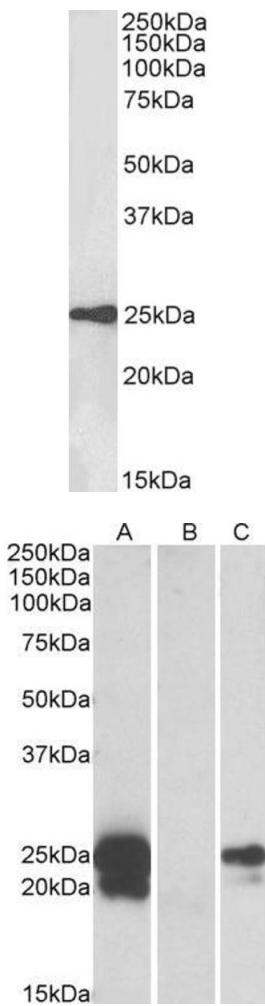
Target:	WFDC2
Alternative Name:	WFDC2 (WFDC2 Products)
Background:	WFDC2, WAP four-disulfide core domain 2, EDDM4, HE4, MGC57529, WAP5, dJ461P17.6, WAP domain containing protein HE4-V4, epididymal protein 4, epididymal secretory protein E4, epididymis-specific, whey-acidic protein type, four-disulfide core, major epididy
Gene ID:	10406
NCBI Accession:	NP_006094

Application Details

Application Notes:	Western Blot: Approx 25 kDa band observed in Human Testis lysates (calculated MW of 13 kDa according to NP_006094.3). The observed molecular weight corresponds to earlier findings with different antibodies from other commercial sources. Recommended concen Peptide ELISA: antibody detection limit dilution 1:1000.
Restrictions:	For Research Use only

Handling

Format:	Liquid
Concentration:	0.5 mg/mL
Buffer:	Supplied at 0.5 mg/mL in Tris saline, 0.02 % sodium azide, pH 7.3 with 0.5 % bovine serum albumin.
Preservative:	Sodium azide
Precaution of Use:	This product contains Sodium azide: a POISONOUS AND HAZARDOUS SUBSTANCE which should be handled by trained staff only.
Handling Advice:	Minimize freezing and thawing.
Storage:	-20 °C
Storage Comment:	Aliquot and store at -20°C, with minimal freeze/thawing. A working aliquot may be refrigerated at 4°C for a few weeks and still remain viable.



Western Blotting

Image 1. ABIN571149 (0.01 µg/mL) staining of Human Testes lysate (35 µg protein in RIPA buffer). Detected by chemiluminescence.

Western Blotting

Image 2. HEK293 lysate (10ug protein in RIPA buffer) overexpressing Human WFDC2 with C-terminal MYC tag probed with ABIN571149 (1ug/ml) in Lane A and probed with anti-MYC Tag (1/1000) in lane C. Mock-transfected HEK293 probed with ABIN571149 (1mg/ml) in Lane B. Primary incubations were for 1 hour. Detected by chemiluminescence.