

Datasheet for ABIN5711495
IFNE Protein (AA 22-208) (His tag)



[Go to Product page](#)

1 Image

Overview

Quantity:	100 µg
Target:	IFNE
Protein Characteristics:	AA 22-208
Origin:	Human
Source:	Escherichia coli (E. coli)
Protein Type:	Recombinant
Purification tag / Conjugate:	This IFNE protein is labelled with His tag.
Application:	SDS-PAGE (SDS)

Product Details

Sequence:	LDLKLIFQQ RQVNQESLKL LNKLQTLISQ QCLPHRKNFL LPQKSLSPQQ YQKGHTLAIL HEMLQQIFSL FRANISLDGW EENHTEKFLI QLHQQLEYLE ALMGLEAEKL SGTLGSDNLR LQVKMYFRRI HDYLENQDYS TCAWAIVQVE ISRCLFFVFS LTEKLSKQGR PLNDMKQELT TEFRSPR
Purification:	SDS-PAGE
Purity:	> 90 %

Target Details

Target:	IFNE
Alternative Name:	IFNE (IFNE Products)
Background:	Type I interferon required for maintaining basal levels of IFN-regulated genes, including 2'-5'-

Target Details

oligoadenylate synthetase, IRF7 and ISG15, in the male reproductive tract. Directly mediates protection against viral and bacterial genital infections .

Molecular Weight: 26.2 kDa

UniProt: [Q86WN2](#)

Pathways: [Hormone Activity](#)

Application Details

Application Notes: Optimal working dilution should be determined by the investigator.

Restrictions: For Research Use only

Handling

Format: Liquid

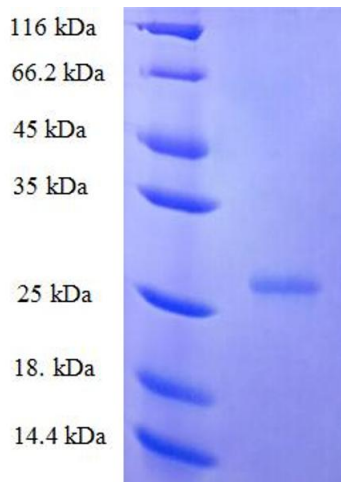
Concentration: 0.1-2 mg/mL

Buffer: 20 mM Tris-HCl based buffer, pH 8.0

Storage: -80 °C, 4 °C, -20 °C

Storage Comment: Store at -20°C, for extended storage, conserve at -20°C or -80°C. Repeated freezing and thawing is not recommended. Store working aliquots at 4°C for up to one week.

Images



SDS-PAGE

Image 1.