

Datasheet for ABIN5711523

IREM1 Protein (AA 20-156) (His tag)[Go to Product page](#)**1** Image

Overview

Quantity:	100 µg
Target:	IREM1
Protein Characteristics:	AA 20-156
Origin:	Human
Source:	Escherichia coli (E. coli)
Protein Type:	Recombinant
Purification tag / Conjugate:	This IREM1 protein is labelled with His tag.
Application:	SDS-PAGE (SDS)

Product Details

Sequence:	TQITGPTTVN GLERGLTVQ CVYRSGWETY LKWWCRGAIW RDCKILVKTS GSEQEVKRDR VSIKDNQKNR TFTVTMEDLM KTDADTYWCG IEKTGNDLGV TVQVTIDPAP VTQEETSSSP TLTGHHLDNR HKLLKLS
Purification:	SDS-PAGE
Purity:	> 90 %

Target Details

Target:	IREM1
Alternative Name:	CLM1 (IREM1 Products)
Background:	Acts as an inhibitory receptor for myeloid cells and mast cells. Inhibits osteoclast formation.

Target Details

Molecular Weight: 19.59 kDa

UniProt: [Q8TDQ1](#)

Application Details

Application Notes: Optimal working dilution should be determined by the investigator.

Restrictions: For Research Use only

Handling

Format: Liquid

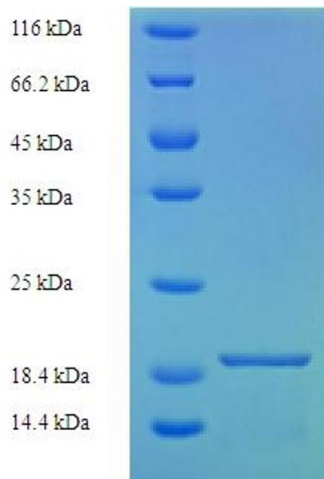
Concentration: 0.1-2 mg/mL

Buffer: 20 mM Tris-HCl based buffer, pH 8.0

Storage: -80 °C, 4 °C, -20 °C

Storage Comment: Store at -20°C, for extended storage, conserve at -20°C or -80°C. Repeated freezing and thawing is not recommended. Store working aliquots at 4°C for up to one week.

Images



SDS-PAGE

Image 1.