



[Go to Product page](#)

Datasheet for ABIN5711533

BCL2L2 Protein (AA 2-193) (His-SUMO Tag)

1 Image

Overview

Quantity:	100 µg
Target:	BCL2L2
Protein Characteristics:	AA 2-193
Origin:	Human
Source:	Escherichia coli (E. coli)
Protein Type:	Recombinant
Purification tag / Conjugate:	This BCL2L2 protein is labelled with His-SUMO Tag.
Application:	SDS-PAGE (SDS)

Product Details

Sequence:	ATPASAPDTR ALVADFGYK LRQKGYVCGA GPGEPAADP LHQAMRAAGD EFETRFRTF SDLAAQLHVT PGSAQQRFTQ VSDELFQGGP NWGRLVAFFV FGAALCAESV NKEMEPLVGQ VQEWVMVAYLE TRLADWIHSS GGWAEFTALY GDGALEEARR LREGNWASVR TVLTGAVALG ALVTVGAFFA SK
Purification:	SDS-PAGE
Purity:	> 90 %

Target Details

Target:	BCL2L2
Alternative Name:	B2CL2 (BCL2L2 Products)
Background:	Promotes cell survival. Blocks dexamethasone-induced apoptosis. Mediates survival of

Target Details

postmitotic Sertoli cells by suppressing death-promoting activity of BAX.

Molecular Weight: 36.6 kDa

UniProt: [Q92843](#)

Application Details

Application Notes: Optimal working dilution should be determined by the investigator.

Restrictions: For Research Use only

Handling

Format: Liquid

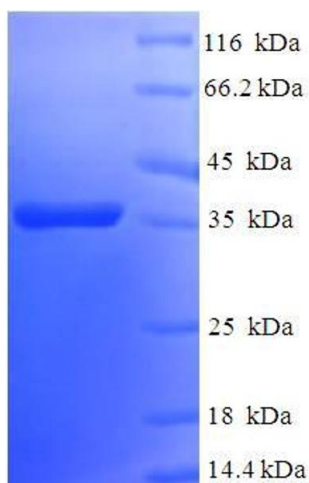
Concentration: 0.1-2 mg/mL

Buffer: 20 mM Tris-HCl based buffer, pH 8.0

Storage: -80 °C, 4 °C, -20 °C

Storage Comment: Store at -20°C, for extended storage, conserve at -20°C or -80°C. Repeated freezing and thawing is not recommended. Store working aliquots at 4°C for up to one week.

Images



SDS-PAGE

Image 1.