

Datasheet for ABIN5711543

IL22 Receptor alpha 1 Protein (AA 250-573, Cytosolic, partial) (His-SUMO Tag)



[Go to Product page](#)

1 Image

Overview

Quantity:	100 µg
Target:	IL22 Receptor alpha 1 (IL22RA1)
Protein Characteristics:	Cytosolic, AA 250-573, partial
Origin:	Human
Source:	Escherichia coli (E. coli)
Protein Type:	Recombinant
Purification tag / Conjugate:	This IL22 Receptor alpha 1 protein is labelled with His-SUMO Tag.
Application:	SDS-PAGE (SDS)

Product Details

Sequence:	SYRYVTKPPA PPNSLNVQRV LTFQPLRFIQ EHVLI PVFDL SGPSSLAQPV QYSQIRVSGP REPAGAPQRH SLSEITYLGQ PDISILQPSN VPPPQILSPL SYAPNAAPEV GPPSYAPQVT PEAQFPFYAP QAISKVQPSS YAPQATPDSW PPSYGVCMEG SGKDSPTGTL SSPKHLRPKG QLQKEPPAGS CMLGGLSLQE VTSLAMEESQ EAKSLHQPLG ICTDRTSDPN VLHSGEETP QYLKGQLPLL SSVQIEGHPM SLPLQPPSRP CSPSDQGPSP WGLLESVCP KDEAKSPAPE TSDLEQPTTEL DSLFRGLALT VQWE
Purification:	SDS-PAGE
Purity:	> 90 %

Target Details

Target:	IL22 Receptor alpha 1 (IL22RA1)
---------	---------------------------------

Target Details

Alternative Name: [I22R1 \(IL22RA1 Products\)](#)

Background: Component of the receptor for IL20, IL22 and IL24. Component of IL22 receptor formed by IL22RA1 and IL10RB enabling IL22 signaling via JAK/STAT pathways. IL22 also induces activation of MAPK1/MAPK3 and Akt kinases pathways. Component of one of the receptor for IL20 and IL24 formed by IL22RA1 and IL20RB also signaling through STATs activation. Mediates IL24 antiangiogenic activity as well as IL24 inhibitory effect on endothelial cell tube formation and differentiation.

Molecular Weight: 50.8 kDa

UniProt: [Q8N6P7](#)

Application Details

Application Notes: Optimal working dilution should be determined by the investigator.

Restrictions: For Research Use only

Handling

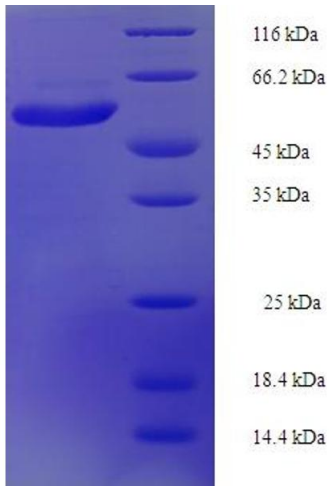
Format: Liquid

Concentration: 0.1-2 mg/mL

Buffer: 20 mM Tris-HCl based buffer, pH 8.0

Storage: -80 °C, 4 °C, -20 °C

Storage Comment: Store at -20°C, for extended storage, conserve at -20°C or -80°C. Repeated freezing and thawing is not recommended. Store working aliquots at 4°C for up to one week.



SDS-PAGE

Image 1.