



[Go to Product page](#)

Datasheet for ABIN5711608

VSTM2L Protein (AA 25-204) (His-SUMO Tag)

1 Image

Overview

| | |
|-------------------------------|--|
| Quantity: | 100 µg |
| Target: | VSTM2L |
| Protein Characteristics: | AA 25-204 |
| Origin: | Human |
| Source: | Escherichia coli (E. coli) |
| Protein Type: | Recombinant |
| Purification tag / Conjugate: | This VSTM2L protein is labelled with His-SUMO Tag. |
| Application: | SDS-PAGE (SDS) |

Product Details

| | |
|---------------|--|
| Sequence: | TRPAGHAPWD NHVSGHALFT ETPHDMTART GEDVEMACSF RGSGPSYSYL EIQWWYVRSH RDWTDKQAWA SNQLKASQQE DAGKEATKIS VVKVVGSNIS HKLRLSRVKP TDEGSYECRV IDFSDGKARH HKVKAYLRVQ PGENSVLHLP EAPPAAPAPP PPKPGKELRK RSV DQEACSL |
| Purification: | SDS-PAGE |
| Purity: | > 90 % |

Target Details

| | |
|-------------------|---|
| Target: | VSTM2L |
| Alternative Name: | VTM2L (VSTM2L Products) |
| Molecular Weight: | 36 kDa |

Target Details

UniProt: [Q96N03](#)

Application Details

Application Notes: Optimal working dilution should be determined by the investigator.

Restrictions: For Research Use only

Handling

Format: Liquid

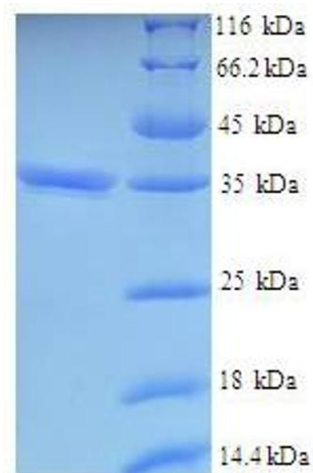
Concentration: 0.1-2 mg/mL

Buffer: 20 mM Tris-HCl based buffer, pH 8.0

Storage: -80 °C, 4 °C, -20 °C

Storage Comment: Store at -20°C, for extended storage, conserve at -20°C or -80°C. Repeated freezing and thawing is not recommended. Store working aliquots at 4°C for up to one week.

Images



SDS-PAGE

Image 1.