



Datasheet for ABIN5711611
anti-SLAMF1 antibody (APC)



[Go to Product page](#)

2 Images

Overview

Quantity:	100 tests
Target:	SLAMF1
Reactivity:	Human
Host:	Mouse
Clonality:	Monoclonal
Conjugate:	This SLAMF1 antibody is conjugated to APC
Application:	Flow Cytometry (FACS)

Product Details

Immunogen:	Human CD150-transfected 300.19 cells
Clone:	SLAM-4
Isotype:	IgG1
Specificity:	The mouse monoclonal antibody SLAM.4 recognizes an extracellular epitope of CD150, a cell surface molecule expressed on lymphocytes and involved in their activation.
Cross-Reactivity (Details):	Human
Purification:	Purified antibody is conjugated with activated allophycocyanin (APC) under optimum conditions and unconjugated antibody and free fluorochrome are removed by size-exclusion chromatography.

Target Details

Target:	SLAMF1
---------	--------

Target Details

Alternative Name: CD150 ([SLAMF1 Products](#))

Background: Signaling lymphocytic activation molecule family m,CD150, also known as SLAM (signaling lymphocyte activation molecule) is a 70-95 kDa single chain transmembrane phosphoglycoprotein of the CD2 family. Its extracellular part contains eight potential N-glycosylation sites, and the intracellular tail contains three unique tyrosine-based motifs. These binding sites can be recognized by SH2-binding phosphatases and the adaptor proteins, such as SAP/SH2D1A or EAT-2. The SLAM family receptors are involved in leucocyte activation and contribute to the effective germinal center formation, generation of high-affinity antibody-secreting plasma cells, and memory T and B cells, thereby facilitating long-term immune response. CD150 expression is upregulated after cell activation.,SLAM, SLAMF1

Gene ID: 6504

UniProt: [Q13291](#)

Application Details

Application Notes: Flow cytometry: The reagent is designed for analysis of human blood cells using 10 µL reagent / 100 µL of whole blood or 10⁶ cells in a suspension. The content of a vial (1 ml) is sufficient for 100 tests.

Comment: The purified antibody is conjugated with cross-linked Allophycocyanin (APC) under optimum conditions. The conjugate is purified by size-exclusion chromatography and adjusted for direct use. No reconstitution is necessary.

Restrictions: For Research Use only

Handling

Buffer: Stabilizing phosphate buffered saline (PBS), pH 7.4, 15 mM sodium azide

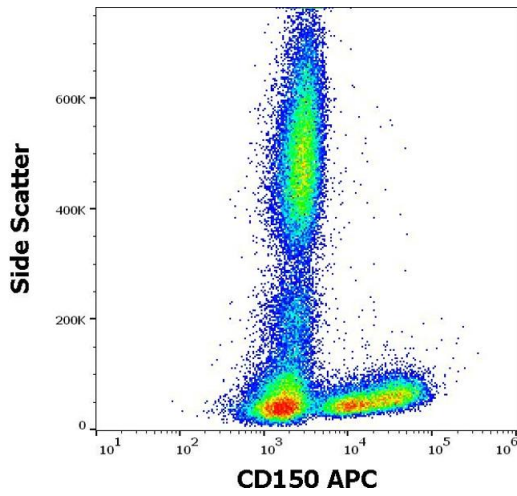
Preservative: Sodium azide

Precaution of Use: This product contains Sodium azide: a POISONOUS AND HAZARDOUS SUBSTANCE which should be handled by trained staff only.

Handling Advice: The purified antibody is conjugated with cross-linked Allophycocyanin (APC) under optimum conditions. The conjugate is purified by size-exclusion chromatography and adjusted for direct use. No reconstitution is necessary.

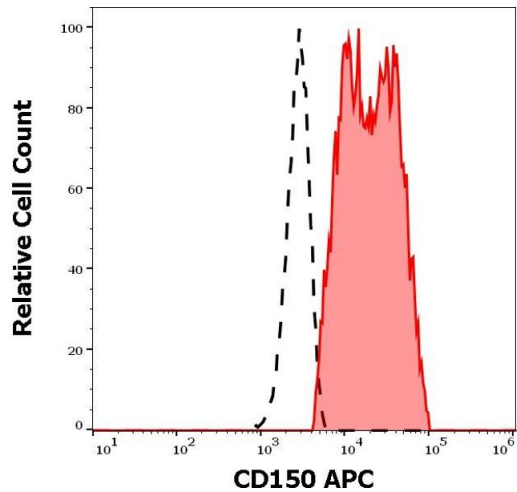
Storage: 4 °C

Storage Comment: Store at 2-8°C. Protect from prolonged exposure to light. Do not freeze.



Flow Cytometry

Image 1. Flow cytometry surface staining pattern of human peripheral whole blood stained using anti-human CD150 (SLAM.4) APC antibody (10 µL reagent / 100 µL of peripheral whole blood).



Flow Cytometry

Image 2. Separation of human CD150 positive lymphocytes (red-filled) from neutrophil granulocytes (black-dashed) in flow cytometry analysis (surface staining) of human peripheral whole blood stained using anti-human CD150 (SLAM.4) APC antibody (10 µL reagent / 100 µL of peripheral whole blood).