

Datasheet for ABIN571162

**anti-POU4F3 antibody (Internal Region)**[Go to Product page](#)**1** Image

## Overview

Quantity:	100 µg
Target:	POU4F3
Binding Specificity:	Internal Region
Reactivity:	Human, Mouse
Host:	Goat
Clonality:	Polyclonal
Conjugate:	This POU4F3 antibody is un-conjugated
Application:	Western Blotting (WB), ELISA

## Product Details

Purpose:	POU4F3
Immunogen:	C-EAAYREKNSKPE
Sequence:	EAAYREKNSK PE
Isotype:	IgG
Specificity:	This antibody is expected not to cross-react to the similar POU4F1 and POU4F2.
Cross-Reactivity:	Dog, Human, Mouse, Rat
Purification:	Purified from goat serum by ammonium sulphate precipitation followed by antigen affinity chromatography using the immunizing peptide.
Grade:	Verified

## Target Details

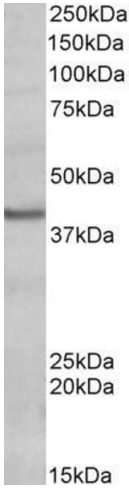
Target:	POU4F3
Alternative Name:	POU4F3 ( <a href="#">POU4F3 Products</a> )
Background:	POU4F3, POU class 4 homeobox 3, BRN3C, DFNA15, MGC138412, POU domain, class 4, transcription factor 3
Gene ID:	5459
NCBI Accession:	<a href="#">NP_002691</a>
Pathways:	<a href="#">Sensory Perception of Sound</a>

## Application Details

Application Notes:	Western Blot: Approx 40 kDa band observed in Human and Mouse Heart lysates (calculated MW of 37.1 kDa according to Human NP_002691.1). Recommended concentration: 0.2-0.6 µg/mL. Peptide ELISA: antibody detection limit dilution 1:8000.
Restrictions:	For Research Use only

## Handling

Format:	Liquid
Concentration:	0.5 mg/mL
Buffer:	Supplied at 0.5 mg/mL in Tris saline, 0.02 % sodium azide, pH 7.3 with 0.5 % bovine serum albumin.
Preservative:	Sodium azide
Precaution of Use:	This product contains Sodium azide: a POISONOUS AND HAZARDOUS SUBSTANCE which should be handled by trained staff only.
Handling Advice:	Minimize freezing and thawing.
Storage:	-20 °C
Storage Comment:	Aliquot and store at -20°C, with minimal freeze/thawing. A working aliquot may be refrigerated at 4°C for a few weeks and still remain viable.



Western Blotting

**Image 1.** ABIN571162 (0.2µg/ml) staining of Human Heart lysate (35µg protein in RIPA buffer). Primary incubation was 1 hour. Detected by chemiluminescence.