



[Go to Product page](#)

Datasheet for ABIN5711621
anti-CD161 antibody (APC)

1 Image

Overview

Quantity:	100 tests
Target:	CD161 (KLRB1)
Reactivity:	Human, Non-Human Primate
Host:	Mouse
Clonality:	Monoclonal
Conjugate:	This CD161 antibody is conjugated to APC
Application:	Flow Cytometry (FACS)

Product Details

Immunogen:	human NK cells
Clone:	HP-3G10
Isotype:	IgG1 kappa
Specificity:	The mouse monoclonal antibody HP-3G10 recognizes an extracellular epitope of CD161, a type II transmembrane C-type lectin receptor, expressed on the plasma membrane of NK cells, dendritic cells, activated monocytes and a subset of T cells as a disulphide-linked homodimer.
Cross-Reactivity (Details):	Human, Non-Human Primates
Purification:	Purified antibody is conjugated with activated allophycocyanin (APC) under optimum conditions and unconjugated antibody and free fluorochrome are removed by size-exclusion chromatography.

Target Details

Target:	CD161 (KLRB1)
Alternative Name:	CD161 (KLRB1 Products)
Background:	<p>Killer cell lectin like receptor B1,CD161, also known as Nkrp1 (natural killer receptor protein 1) or Klrb1 (killer cell lectin-like receptor subfamily b member 1), is a disulphide-linked homodimeric receptor, which is involved in regulation of NK cell and NKT cell function. It is expressed on rat NK cells, subset of T cells, dendritic cells, and activated monocytes. Although human CD161 is expressed as one isoform, the rat CD161 has three isoforms, referred to as CD161a, b, and c. These proteins contain C-terminal C-type lectin extracellular domain, a transmembrane domain, and N-terminal intracellular domain, which contains ITIM motif, such as CD161b, and displays inhibitory function, or does not contain ITIM motif, thus also not the inhibitory function, such as CD161a.,NKRP1A, KLRB1, CLEC5B</p>
Gene ID:	3820
UniProt:	Q12918

Application Details

Application Notes:	Flow cytometry: The reagent is designed for analysis of human blood cells using 10 µL reagent / 100 µL of whole blood or 10 ⁶ cells in a suspension. The content of a vial (1 ml) is sufficient for 100 tests.
Comment:	The purified antibody is conjugated with cross-linked Allophycocyanin (APC) under optimum conditions. The conjugate is purified by size-exclusion chromatography and adjusted for direct use. No reconstitution is necessary.
Restrictions:	For Research Use only

Handling

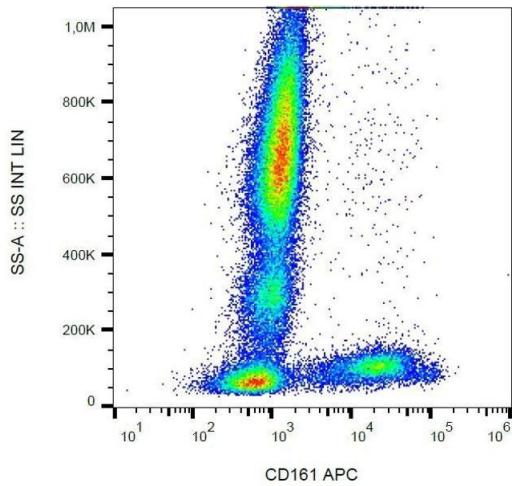
Buffer:	Stabilizing phosphate buffered saline (PBS), pH 7.4, 15 mM sodium azide
Preservative:	Sodium azide
Precaution of Use:	This product contains Sodium azide: a POISONOUS AND HAZARDOUS SUBSTANCE which should be handled by trained staff only.
Handling Advice:	The purified antibody is conjugated with cross-linked Allophycocyanin (APC) under optimum conditions. The conjugate is purified by size-exclusion chromatography and adjusted for direct use. No reconstitution is necessary.

Handling

Storage: 4 °C

Storage Comment: Store at 2-8°C. Protect from prolonged exposure to light. Do not freeze.

Images



Flow Cytometry

Image 1. Surface staining of human peripheral blood cells using anti-CD161 (HP-3G10) APC.