



[Go to Product page](#)

Datasheet for ABIN5711632

ATOH1 Protein (AA 1-354, full length) (His-SUMO Tag)

1 Image

Overview

Quantity:	100 µg
Target:	ATOH1
Protein Characteristics:	AA 1-354, full length
Origin:	Human
Source:	Escherichia coli (E. coli)
Protein Type:	Recombinant
Purification tag / Conjugate:	This ATOH1 protein is labelled with His-SUMO Tag.
Application:	SDS-PAGE (SDS)

Product Details

Sequence:	MSRLLHAE EW AEVKELGDHH RQPQPHLPQ PPPPPQPPAT LQAREHPVYP PELSLLDSTD PRAWLAPTLQ GICTARAAQY LLHSPELGAS EAAAPRDEVD GRGELVRRSS GGASSSKSPG PVKVREQLCK LKGGVVVDEL GCSRQRAPSS KQVNGVQKQR RLAANARERR RMHGLNHAFD QLRNVIPSFN NDKKLSKYET LQMAQIYINA LSELLQTPSG GEQPPPPPAS CKSDHHHLRT AASYEGGAGN ATAAGAQQAS GGSQRPTPPG SCRTRFSAPA SAGGYSVQLD ALHFSTFEDS ALTAMMAQKN LSPSLPGSIL QPVQEENSKT SPRSHRSDGE FSPHSHYS DS DEAS
Purification:	SDS-PAGE
Purity:	> 90 %

Target Details

Target:	ATOH1
---------	-------

Target Details

Alternative Name:	ATOH1 (ATOH1 Products)
Background:	Transcriptional regulator. Activates E box-dependent transcription in collaboration with TCF3/E47, but the activity is completely antagonized by the negative regulator of neurogenesis HES1. Plays a role in the differentiation of subsets of neural cells by activating E box-dependent transcription .
Molecular Weight:	54.1 kDa
UniProt:	Q92858

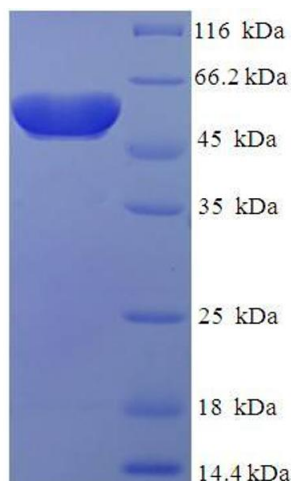
Application Details

Application Notes:	Optimal working dilution should be determined by the investigator.
Restrictions:	For Research Use only

Handling

Format:	Liquid
Concentration:	0.1-2 mg/mL
Buffer:	20 mM Tris-HCl based buffer, pH 8.0
Storage:	-80 °C,4 °C,-20 °C
Storage Comment:	Store at -20°C, for extended storage, conserve at -20°C or -80°C. Repeated freezing and thawing is not recommended. Store working aliquots at 4°C for up to one week.

Images



SDS-PAGE

Image 1.