

Datasheet for ABIN5711668

ESAM Protein (AA 30-248, Extracellular) (His-SUMO Tag)[Go to Product page](#)**1** Image

Overview

Quantity:	100 µg
Target:	ESAM
Protein Characteristics:	Extracellular, AA 30-248
Origin:	Human
Source:	Escherichia coli (E. coli)
Protein Type:	Recombinant
Purification tag / Conjugate:	This ESAM protein is labelled with His-SUMO Tag.
Application:	SDS-PAGE (SDS)

Product Details

Sequence:	QLQLHLPANR LQAVEGGEVV LPAWYTLHGE VSSSQPWEVP FVMWFFKQKE KEDQVLSYIN GVTTSKPGVS LVYSMPSRNL SLRLEGLQEK DSGPYSCSVN VQDKQGKSRG HSIKTLELNV LVPPAPPSCR LQGVPHVGAN VTLSCQSPRS KPAVQYQWDR QLPSFQTFFA PALDVIRGSL SLTNLSSMA GVVYCKAHNE VGTAQCNVTL EVSTGPGAA
Purification:	SDS-PAGE
Purity:	> 90 %

Target Details

Target:	ESAM
Alternative Name:	ESAM (ESAM Products)
Background:	Can mediate aggregation most likely through a homophilic molecular interaction.

Target Details

Molecular Weight: 39.8 kDa

UniProt: [Q96AP7](#)

Application Details

Application Notes: Optimal working dilution should be determined by the investigator.

Restrictions: For Research Use only

Handling

Format: Liquid

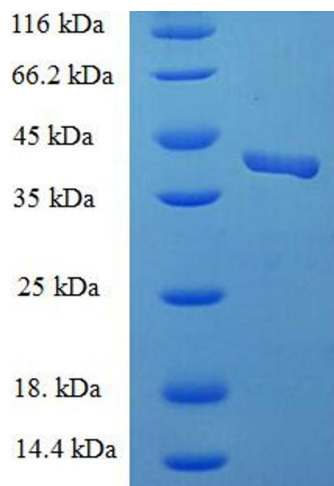
Concentration: 0.1-2 mg/mL

Buffer: 20 mM Tris-HCl based buffer, pH 8.0

Storage: -80 °C, 4 °C, -20 °C

Storage Comment: Store at -20°C, for extended storage, conserve at -20°C or -80°C. Repeated freezing and thawing is not recommended. Store working aliquots at 4°C for up to one week.

Images



SDS-PAGE

Image 1.