

Datasheet for ABIN571168  
**anti-PBX1 antibody (Internal Region)**[Go to Product page](#)

## 2 Images

## Overview

Quantity:	100 µg
Target:	PBX1
Binding Specificity:	Internal Region
Reactivity:	Human, Mouse, Rat
Host:	Goat
Clonality:	Polyclonal
Conjugate:	This PBX1 antibody is un-conjugated
Application:	Western Blotting (WB), ELISA

## Product Details

Purpose:	PBX1
Immunogen:	C-ATNVSAHGSQLANSPS
Sequence:	ATNVSAHGSQLANSPS
Isotype:	IgG
Cross-Reactivity:	Dog, Human, Mouse, Rat
Purification:	Purified from goat serum by ammonium sulphate precipitation followed by antigen affinity chromatography using the immunizing peptide.
Grade:	Verified

## Target Details

Target:	PBX1
Alternative Name:	PBX1 ( <a href="#">PBX1 Products</a> )
Background:	PBX1, pre-B-cell leukemia homeobox 1, DKFZp686B09108, MGC126627, Pre-B cell leukemia transcription factor-1, pre-B-cell leukemia transcription factor 1
Gene ID:	5087, 18514
NCBI Accession:	<a href="#">NP_002576</a>

## Application Details

Application Notes:	Western Blot: Approx 45 kDa band observed in lysates of cell line K562, in Mouse and Rat Eye and in Rat Uterus lysates (calculated MW of 46.6 kDa according to Human NP_002576.1). Recommended concentration: 0.3-1 µg/mL. Peptide ELISA: antibody detection limit dilution 1:32000.
Restrictions:	For Research Use only

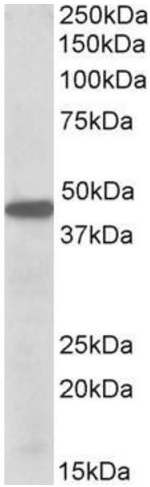
## Handling

Format:	Liquid
Concentration:	0.5 mg/mL
Buffer:	Supplied at 0.5 mg/mL in Tris saline, 0.02 % sodium azide, pH 7.3 with 0.5 % bovine serum albumin.
Preservative:	Sodium azide
Precaution of Use:	This product contains Sodium azide: a POISONOUS AND HAZARDOUS SUBSTANCE which should be handled by trained staff only.
Handling Advice:	Minimize freezing and thawing.
Storage:	-20 °C
Storage Comment:	Aliquot and store at -20°C, with minimal freeze/thawing. A working aliquot may be refrigerated at 4°C for a few weeks and still remain viable.



Western Blotting

**Image 1.** ABIN571168 (0.5µg/ml) staining of Mouse Eye lysate (35µg protein in RIPA buffer). Primary incubation was 1 hour. Detected by chemiluminescence.



Western Blotting

**Image 2.** ABIN571168 (0.5µg/ml) staining of K562 lysate (35µg protein in RIPA buffer). Primary incubation was 1 hour. Detected by chemiluminescence.