

Datasheet for ABIN571170  
**anti-Cullin 2 antibody (C-Term)**[Go to Product page](#)

## 2 Images

## Overview

Quantity:	100 µg
Target:	Cullin 2 (CUL2)
Binding Specificity:	C-Term
Reactivity:	Human, Mouse
Host:	Goat
Clonality:	Polyclonal
Conjugate:	This Cullin 2 antibody is un-conjugated
Application:	Western Blotting (WB), ELISA, Immunohistochemistry (IHC)

## Product Details

Purpose:	CUL2
Immunogen:	Peptide with sequence C-QYIERSQASADE, from the C Terminus of the protein sequence according to NP_003582.2.
Sequence:	QYIERSQASA DE
Isotype:	IgG
Cross-Reactivity:	Cow, Dog, Human, Mouse, Rat
Purification:	Purified from goat serum by ammonium sulphate precipitation followed by antigen affinity chromatography using the immunizing peptide.
Grade:	Verified

## Target Details

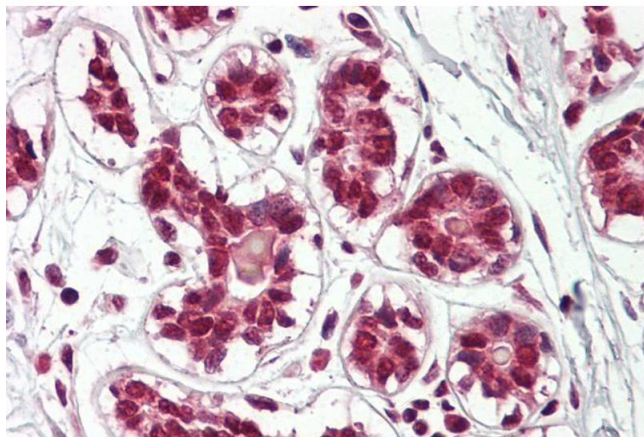
Target:	Cullin 2 (CUL2)
Alternative Name:	CUL2 ( <a href="#">CUL2 Products</a> )
Background:	CUL2, cullin 2, MGC131970, OTTHUMP00000019437
Gene ID:	8453, 71745, 361258
NCBI Accession:	<a href="#">NP_003582</a>
Pathways:	<a href="#">M Phase</a> , <a href="#">Asymmetric Protein Localization</a> , <a href="#">SARS-CoV-2 Protein Interactome</a>

## Application Details

Application Notes:	Immunohistochemistry: Paraffin embedded Human Breast. Recommended concentration: 3.75 µg/mL.  Western Blot: Approx 100 kDa band observed in lysates of cell line NIH3T3 (calculated MW of 87.0 kDa according to Human NP_003582.2 and of 86.9 kDa according to Mouse NP_083678.2). Recommended concentration: 1-3 µg/mL. Primary incubation was 1 hour.  Peptide ELISA: antibody detection limit dilution 1:8000.
Restrictions:	For Research Use only

## Handling

Format:	Liquid
Concentration:	0.5 mg/mL
Buffer:	Supplied at 0.5 mg/mL in Tris saline, 0.02 % sodium azide, pH 7.3 with 0.5 % bovine serum albumin.
Preservative:	Sodium azide
Precaution of Use:	This product contains Sodium azide: a POISONOUS AND HAZARDOUS SUBSTANCE which should be handled by trained staff only.
Handling Advice:	Minimize freezing and thawing.
Storage:	-20 °C
Storage Comment:	Aliquot and store at -20°C, with minimal freeze/thawing. A working aliquot may be refrigerated at 4°C for a few weeks and still remain viable.



#### Immunohistochemistry

**Image 1.** ABIN571170 (3.75µg/ml) staining of paraffin embedded Human Breast. Steamed antigen retrieval with citrate buffer pH 6, AP-staining.



#### Western Blotting

**Image 2.** ABIN571170 (1µg/ml) staining of NIH3T3 lysate (35µg protein in RIPA buffer). Detected by chemiluminescence.