



[Go to Product page](#)

Datasheet for ABIN5711709

MYLPF Protein (AA 2-169) (His-SUMO Tag)

1 Image

Overview

Quantity:	100 µg
Target:	MYLPF
Protein Characteristics:	AA 2-169
Origin:	Human
Source:	Escherichia coli (E. coli)
Protein Type:	Recombinant
Purification tag / Conjugate:	This MYLPF protein is labelled with His-SUMO Tag.
Application:	SDS-PAGE (SDS)

Product Details

Sequence:	APKRAKRRTV EGGSSSVFSM FDQTQIQEFK EAFTVIDQNR DGIIDKEDLR DTFAAMGRLN VKNEELDAMM KEASGPINFT VFLTMFGEKL KGADPEDVIT GAFKVLDPPEG KGTIKKKFLE ELLTTQCDRF SQEEIKNMWA AFPPDVGGNV DYKNICYVIT HGDAKDQE
Purification:	SDS-PAGE
Purity:	> 90 %

Target Details

Target:	MYLPF
Alternative Name:	MLRS (MYLPF Products)
Molecular Weight:	34.87 kDa

Target Details

UniProt: [Q96A32](#)

Pathways: [Myometrial Relaxation and Contraction](#)

Application Details

Application Notes: Optimal working dilution should be determined by the investigator.

Restrictions: For Research Use only

Handling

Format: Liquid

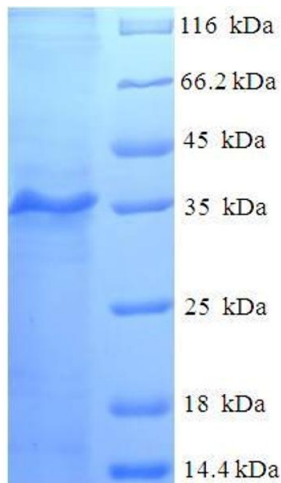
Concentration: 0.1-2 mg/mL

Buffer: 20 mM Tris-HCl based buffer, pH 8.0

Storage: -80 °C, 4 °C, -20 °C

Storage Comment: Store at -20°C, for extended storage, conserve at -20°C or -80°C. Repeated freezing and thawing is not recommended. Store working aliquots at 4°C for up to one week.

Images



SDS-PAGE

Image 1.