

Datasheet for ABIN571171
anti-GNAS antibody (Internal Region)[Go to Product page](#)

4 Images

Overview

| | |
|----------------------|-------------------------------------|
| Quantity: | 100 µg |
| Target: | GNAS |
| Binding Specificity: | Internal Region |
| Reactivity: | Human, Mouse, Rat |
| Host: | Goat |
| Clonality: | Polyclonal |
| Conjugate: | This GNAS antibody is un-conjugated |
| Application: | Western Blotting (WB), ELISA |

Product Details

| | |
|-------------------|--|
| Purpose: | GNAS |
| Immunogen: | Peptide with sequence C-QAARSNSDGEKATK, from the internal region of the protein sequence according to NP_000507.1, NP_001070956.1, NP_001070957.1. |
| Sequence: | QAARSNSDGE KATK |
| Isotype: | IgG |
| Specificity: | This antibody is expected to recognize all three reported isoforms NP_000507.1, NP_001070956.1 and NP_536350.2. However, in Mouse it is expected to recognize reported isoforms GNASL (NP_963910.1) and XLas (NP_034439.2) only. |
| Cross-Reactivity: | Cow, Human, Mouse, Rat |
| Purification: | Purified from goat serum by ammonium sulphate precipitation followed by antigen affinity |

Product Details

| | |
|--------|--|
| | chromatography using the immunizing peptide. |
| Grade: | Verified |

Target Details

| | |
|-------------------|---|
| Target: | GNAS |
| Alternative Name: | GNAS (GNAS Products) |
| Background: | GNAS, GNAS complex locus, AHO, C20orf45, GNAS1, GPSA, GSA, GSP, MGC33735, NESP, PHP1A, PHP1B, POH, dJ309F20.1.1, dJ806M20.3.3, OTTHUMP00000031742, OTTHUMP00000196026, OTTHUMP00000196030, adenylate cyclase-stimulating G alpha protein, guanine nucleotide bi |
| Gene ID: | 2778, 14683, 24896 |
| NCBI Accession: | NP_000507 , NP_001070956 , NP_001070957 |
| Pathways: | Thyroid Hormone Synthesis , cAMP Metabolic Process , Myometrial Relaxation and Contraction , Embryonic Body Morphogenesis |

Application Details

| | |
|--------------------|---|
| Application Notes: | Western Blot: Approx. 45 kDa band observed in Human Cerebellum, Mouse and Rat Brain lysates, and in lysates of cell line KNRK (calculated MW of 45.6 kDa according to Human NP_963910.1, Mouse NP_963910.1 and Rat NP_062005.1). Recommended concentration: 0.1 Peptide ELISA: antibody detection limit dilution 1:32000. |
| Restrictions: | For Research Use only |

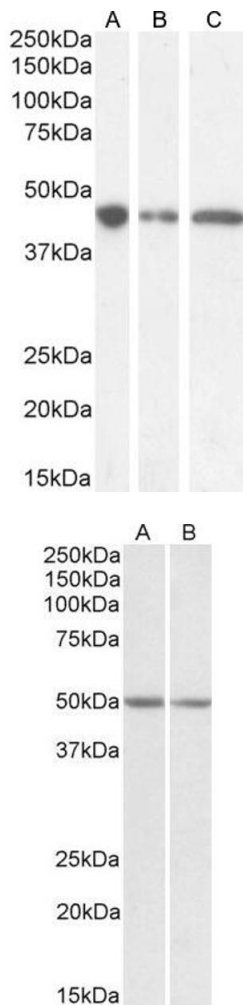
Handling

| | |
|--------------------|--|
| Format: | Liquid |
| Concentration: | 0.5 mg/mL |
| Buffer: | Supplied at 0.5 mg/mL in Tris saline, 0.02 % sodium azide, pH 7.3 with 0.5 % bovine serum albumin. |
| Preservative: | Sodium azide |
| Precaution of Use: | This product contains Sodium azide: a POISONOUS AND HAZARDOUS SUBSTANCE which should be handled by trained staff only. |

Handling

| | |
|------------------|--|
| Handling Advice: | Minimize freezing and thawing. |
| Storage: | -20 °C |
| Storage Comment: | Aliquot and store at -20°C, with minimal freeze/thawing. A working aliquot may be refrigerated at 4°C for a few weeks and still remain viable. |

Images

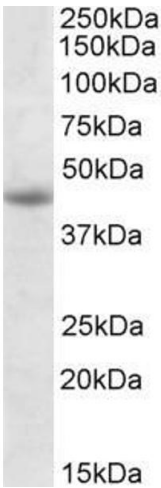


Western Blotting

Image 1. (ABIN571171) (0.5 µg/mL) staining of Human Cerebellum (A) and (0.1 µg/mL) Mouse (B) and Rat (C) Brain lysate (35 µg protein in RIPA buffer). Detected by chemiluminescence.

Western Blotting

Image 2. ABIN571171 (0.1µg/ml) staining of Mouse Brain (A) and Rat Brain (B) lysates (35µg protein in RIPA buffer). Primary incubation was 1 hour. Detected by chemiluminescence.



Western Blotting

Image 3. ABIN571171 (1µg/ml) staining of Jurkat lysate (35µg protein in RIPA buffer). Primary incubation was 1 hour. Detected by chemiluminescence.

Please check the [product details page](#) for more images. Overall 4 images are available for ABIN571171.