

Datasheet for ABIN571172  
**anti-IGF2BP1 antibody (Internal Region)**

## 2 Images

[Go to Product page](#)

## Overview

Quantity:	100 µg
Target:	IGF2BP1
Binding Specificity:	Internal Region
Reactivity:	Human
Host:	Goat
Clonality:	Polyclonal
Conjugate:	This IGF2BP1 antibody is un-conjugated
Application:	Western Blotting (WB), Immunohistochemistry (IHC), ELISA

## Product Details

Purpose:	IMP1 / ZBP1
Immunogen:	Peptide with sequence C-EKVFAEHKISYSGQ, from the internal region of the protein sequence according to NP_006537.3, NP_001153895.1.
Sequence:	EKVFAEHKIS YSGQ
Isotype:	IgG
Specificity:	This antibody is expected to recognize both reported isoforms (NP_006537.3, NP_001153895.1).
Cross-Reactivity:	Cow, Dog, Human, Mouse, Rat
Purification:	Purified from goat serum by ammonium sulphate precipitation followed by antigen affinity chromatography using the immunizing peptide.

## Product Details

Grade: Verified

## Target Details

Target: IGF2BP1

Alternative Name: IGF2BP1 ([IGF2BP1 Products](#))

Background: IGF2BP1, insulin-like growth factor 2 mRNA binding protein 1, CRD-BP, CRDBP, IMP-1, IMP1, VICKZ1, ZBP1, IGF II mRNA binding protein 1, IGF2 mRNA-binding protein 1, VICKZ family member 1, coding region determinant-binding protein, zipcode-binding protein 1

Gene ID: 10642, 140486, 303477

NCBI Accession: [NP\\_006537](#), [NP\\_001153895](#)

## Application Details

Application Notes: Immunohistochemistry: Paraffin embedded Human Breast. Recommended concentration: 3.75 µg/mL.

Western Blot: Approx 65 kDa band observed in lysates of cell line K562 (calculated MW of 63.5 kDa according to NP\_006537.3). Recommended concentration: 0.3-1 µg/mL. Primary incubation was 1 hour.

Peptide ELISA: antibody detection limit dilution 1:16000.

Restrictions: For Research Use only

## Handling

Format: Liquid

Concentration: 0.5 mg/mL

Buffer: Supplied at 0.5 mg/mL in Tris saline, 0.02 % sodium azide, pH 7.3 with 0.5 % bovine serum albumin.

Preservative: Sodium azide

Precaution of Use: This product contains Sodium azide: a POISONOUS AND HAZARDOUS SUBSTANCE which should be handled by trained staff only.

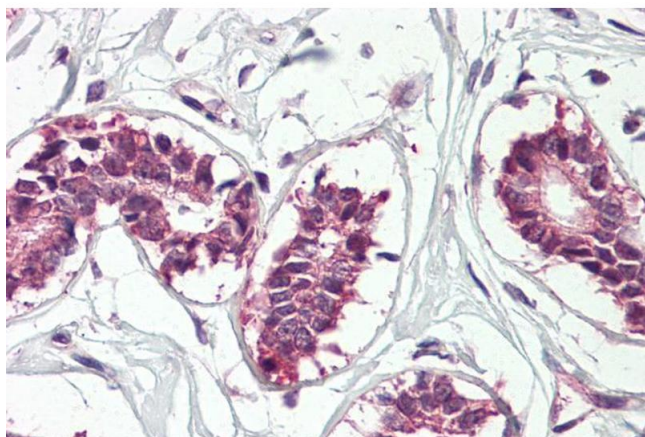
Handling Advice: Minimize freezing and thawing.

Storage: -20 °C

## Handling

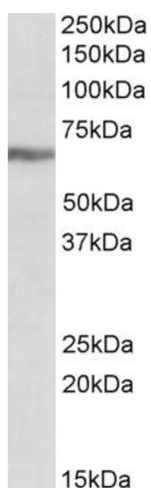
Storage Comment: Aliquot and store at -20°C, with minimal freeze/thawing. A working aliquot may be refrigerated at 4°C for a few weeks and still remain viable.

## Images



### Immunohistochemistry

**Image 1.** ABIN571172 (3.75µg/ml) staining of paraffin embedded Human Breast. Steamed antigen retrieval with citrate buffer pH 6, AP-staining.



### Western Blotting

**Image 2.** ABIN571172 (0.3µg/ml) staining of K562 lysate (35µg protein in RIPA buffer). Detected by chemiluminescence.