

Datasheet for ABIN5711741

**MTR Protein (AA 923-1265) (His-SUMO Tag)**[Go to Product page](#)**1** Image

## Overview

Quantity:	100 µg
Target:	MTR
Protein Characteristics:	AA 923-1265
Origin:	Human
Source:	Escherichia coli (E. coli)
Protein Type:	Recombinant
Purification tag / Conjugate:	This MTR protein is labelled with His-SUMO Tag.
Application:	SDS-PAGE (SDS)

## Product Details

Sequence:	SLKERRYLPL SQARKSGFQM DWLSEPHVK PTFIGTQVFE DYDLQKLVYD IDWKPFDDVW QLRGKYPNRRG FPKIFNDKTV GGEARKVYDD AHNMLNLTIS QKCLRARGVV GFWPAQSIQD DIHLYAEAAV PQAAEPIATF YGLRQQAQEKD SASTEPYYCL SDFIAPLHSG IRDYLGFLFAV ACFGVEELSK AYEDDGDDYS SIMVKALGDR LAEFAEELH ERVRRELWAY CGSEQLDVAD LRRRLRYKGIR PAPGYPSQPD HTEKLTMWRL ADIEQSTGIR LTESLAMAPA SAVSGLYFSN LKSIFYAVGK ISKDQVEDYA LRKNISVAEV EKWLGPILGY DTD
Purification:	SDS-PAGE
Purity:	> 90 %

## Target Details

Target:	MTR
---------	-----

## Target Details

Alternative Name:	METH ( <a href="#">MTR Products</a> )
Target Type:	Chemical
Molecular Weight:	55 kDa
UniProt:	<a href="#">Q99707</a>
Pathways:	<a href="#">Methionine Biosynthetic Process</a>

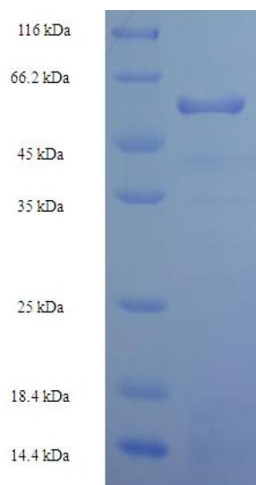
## Application Details

Application Notes:	Optimal working dilution should be determined by the investigator.
Restrictions:	For Research Use only

## Handling

Format:	Liquid
Concentration:	0.1-2 mg/mL
Buffer:	20 mM Tris-HCl based buffer, pH 8.0
Storage:	-80 °C, 4 °C, -20 °C
Storage Comment:	Store at -20°C, for extended storage, conserve at -20°C or -80°C. Repeated freezing and thawing is not recommended. Store working aliquots at 4°C for up to one week.

## Images



### SDS-PAGE

Image 1.