



[Go to Product page](#)

Datasheet for ABIN5711753

CINP Protein (CINP) (AA 1-212, full length) (His-SUMO Tag)

1 Image

Overview

Quantity:	100 µg
Target:	CINP
Protein Characteristics:	full length, AA 1-212
Origin:	Human
Source:	Escherichia coli (E. coli)
Protein Type:	Recombinant
Purification tag / Conjugate:	This CINP protein is labelled with His-SUMO Tag.
Application:	SDS-PAGE (SDS)

Product Details

Sequence:	MEAKTLGTVT PRKPVLSVSA RKIKDNAADW HNLILKWETL NDAGFTTANN IANLKISLLN KDKIELDSSS PASKENEKVK CLEYNEELEK LCEELQATLD GLTKIQVKME KLSSTTKGIC ELENYHYGEE SKRPPLFHTW PTTHFYEVSH KLLMYRKEL LLKRTVAKEL AHTGDPDLTL SYLSMWLHQP YVESDSRLHL ESMLLETGHR AL
Purification:	SDS-PAGE
Purity:	> 90 %

Target Details

Target:	CINP
Alternative Name:	CINP (CINP Products)
Background:	Interacts with the components of the replication complex and 2 kinases, CDK2 and CDC7,

Target Details

thereby providing a functional and physical link between CDK2 and CDC7 during firing of the origins of replication. Regulates ATR-mediated checkpoint signaling.

Molecular Weight: 40.31 kDa

UniProt: [Q9BW66](#)

Application Details

Application Notes: Optimal working dilution should be determined by the investigator.

Restrictions: For Research Use only

Handling

Format: Liquid

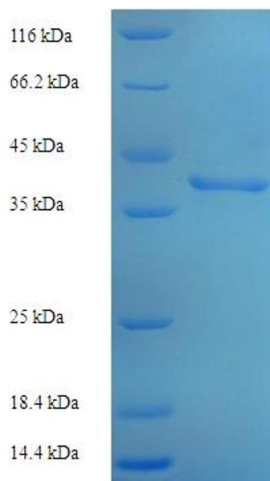
Concentration: 0.1-2 mg/mL

Buffer: 20 mM Tris-HCl based buffer, pH 8.0

Storage: -80 °C, 4 °C, -20 °C

Storage Comment: Store at -20°C, for extended storage, conserve at -20°C or -80°C. Repeated freezing and thawing is not recommended. Store working aliquots at 4°C for up to one week.

Images



SDS-PAGE

Image 1.