



[Go to Product page](#)

Datasheet for ABIN571176

## anti-IL12RB1 antibody (Internal Region)

### 1 Image

#### Overview

Quantity:	100 µg
Target:	IL12RB1
Binding Specificity:	Internal Region
Reactivity:	Human
Host:	Goat
Clonality:	Polyclonal
Conjugate:	This IL12RB1 antibody is un-conjugated
Application:	Western Blotting (WB), ELISA

#### Product Details

Purpose:	IL12RB1
Immunogen:	Peptide with sequence C-HVSVKNHSLDSVS, from the internal region of the protein sequence according to NP_005526.1.
Sequence:	HVSVKNHSLD SVS
Isotype:	IgG
Specificity:	This antibody is expected to recognize isoform 1 (NP_005526.1) only.
Cross-Reactivity:	Human
Purification:	Purified from goat serum by ammonium sulphate precipitation followed by antigen affinity chromatography using the immunizing peptide.
Grade:	Verified

## Target Details

---

Target:	IL12RB1
Alternative Name:	IL12RB1 ( <a href="#">IL12RB1 Products</a> )
Background:	IL12RB1, interleukin 12 receptor, beta 1, CD212, IL-12R-BETA1, IL12RB, MGC34454, IL-12 receptor beta component, interleukin-12 receptor beta-1 chain
Gene ID:	3594
NCBI Accession:	<a href="#">NP_005526</a>
Pathways:	<a href="#">JAK-STAT Signaling</a> , <a href="#">Regulation of Leukocyte Mediated Immunity</a> , <a href="#">Positive Regulation of Immune Effector Process</a> , <a href="#">Activated T Cell Proliferation</a>

## Application Details

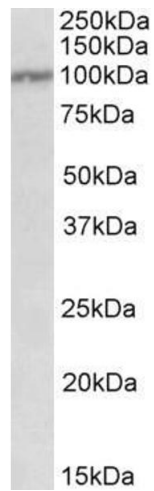
---

Application Notes:	Western Blot: Approx 100 kDa band observed in Human Peripheral Blood Mononucleocytes lysates (calculated MW of 73.1 kDa according to NP_005526.1). The observed molecular weight corresponds to the glycosylated form. Recommended concentration: 0.3-1 µg/mL. Peptide ELISA: antibody detection limit dilution 1:8000.
Restrictions:	For Research Use only

## Handling

---

Format:	Liquid
Concentration:	0.5 mg/mL
Buffer:	Supplied at 0.5 mg/mL in Tris saline, 0.02 % sodium azide, pH 7.3 with 0.5 % bovine serum albumin.
Preservative:	Sodium azide
Precaution of Use:	This product contains Sodium azide: a POISONOUS AND HAZARDOUS SUBSTANCE which should be handled by trained staff only.
Handling Advice:	Minimize freezing and thawing.
Storage:	-20 °C
Storage Comment:	Aliquot and store at -20°C, with minimal freeze/thawing. A working aliquot may be refrigerated at 4°C for a few weeks and still remain viable.



### Western Blotting

**Image 1.** ABIN571176 (0.3 $\mu$ g/ml) staining of Peripheral Blood Lymphocytes lysate (35 $\mu$ g protein in RIPA buffer). Primary incubation was 1 hour. Detected by chemiluminescence.