



[Go to Product page](#)

Datasheet for ABIN5711793

## FKBP14 Protein (AA 20-211) (His-SUMO Tag)

### 1 Image

#### Overview

Quantity:	100 µg
Target:	FKBP14
Protein Characteristics:	AA 20-211
Origin:	Human
Source:	Escherichia coli (E. coli)
Protein Type:	Recombinant
Purification tag / Conjugate:	This FKBP14 protein is labelled with His-SUMO Tag.
Application:	SDS-PAGE (SDS)

#### Product Details

Sequence:	ALIPEPEVKI EVLQKPFICH RKTGGDLML VHYEGYLEKD GSLFHSTHKH NNGQPIWFTL GILEALKGWD QGLKGMCVGE KRKLIIPPAL GYGKEGKGI PPESTLIFNI DLLEIRNGPR SHESFQEMDL NDDWKLSKDE VKAYLKKEFE KHGAVVNESH HDALVEDIFD KEDEDKDGFI SAREFTYKHD EL
Purification:	SDS-PAGE
Purity:	> 90 %

#### Target Details

Target:	FKBP14
Alternative Name:	FKB14 ( <a href="#">FKBP14 Products</a> )
Background:	PPlases accelerate the folding of proteins during protein synthesis.

## Target Details

Molecular Weight:	38 kDa
UniProt:	<a href="#">Q9NWM8</a>
Pathways:	<a href="#">ER-Nucleus Signaling</a>

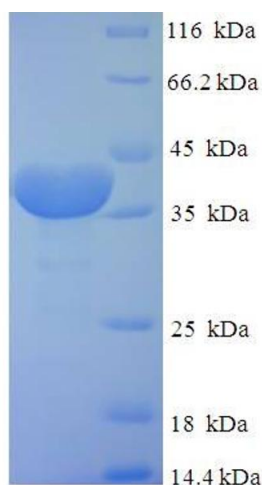
## Application Details

Application Notes:	Optimal working dilution should be determined by the investigator.
Restrictions:	For Research Use only

## Handling

Format:	Liquid
Concentration:	0.1-2 mg/mL
Buffer:	20 mM Tris-HCl based buffer, pH 8.0
Storage:	-80 °C, 4 °C, -20 °C
Storage Comment:	Store at -20°C, for extended storage, conserve at -20°C or -80°C. Repeated freezing and thawing is not recommended. Store working aliquots at 4°C for up to one week.

## Images



### SDS-PAGE

Image 1.