



[Go to Product page](#)

Datasheet for ABIN5711803

LHPP Protein (AA 1-270, full length) (His-SUMO Tag)

1 Image

Overview

Quantity:	100 µg
Target:	LHPP
Protein Characteristics:	full length, AA 1-270
Origin:	Human
Source:	Escherichia coli (E. coli)
Protein Type:	Recombinant
Purification tag / Conjugate:	This LHPP protein is labelled with His-SUMO Tag.
Application:	SDS-PAGE (SDS)

Product Details

Sequence:	<p>MAPWVGKRLAG VRGVLLDISG VLYDSGAGGG TAIAGSVEAV ARLKRSRLKV RFCTNESQKS</p> <p>RAELVGQLQR LGFDISEQEV TAPAPAACQI LKERGLRPYL LIHDGVRSEF DQIDTSNPNC</p> <p>VVIADAGESF SYQNMNNAFQ VLMELEKPVL ISLGKGRYYK ETSGLMLDVG PYMKALEYAC</p> <p>GIKAEVVGKP SPEFFKSALQ AIGVEAHQAV MIGDDIVGDV GGAQRCEMRA LQVRTGKFRP</p> <p>SDEHHPEVKA DGYVDNLAEA VDLLLQHADK</p>
Purification:	SDS-PAGE
Purity:	> 90 %

Target Details

Target:	LHPP
Alternative Name:	LHPP (LHPP Products)

Target Details

Background:	Phosphatase that hydrolyzes imidodiphosphate, 3-phosphohistidine and 6-phospholysine. Has broad substrate specificity and can also hydrolyze inorganic diphosphate, but with lower efficiency .
Molecular Weight:	45.17 kDa
UniProt:	Q9H008

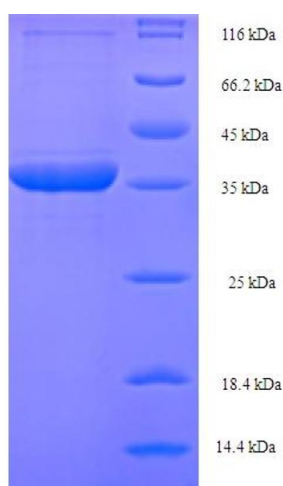
Application Details

Application Notes:	Optimal working dilution should be determined by the investigator.
Restrictions:	For Research Use only

Handling

Format:	Liquid
Concentration:	0.1-2 mg/mL
Buffer:	20 mM Tris-HCl based buffer, pH 8.0
Storage:	-80 °C, 4 °C, -20 °C
Storage Comment:	Store at -20°C, for extended storage, conserve at -20°C or -80°C. Repeated freezing and thawing is not recommended. Store working aliquots at 4°C for up to one week.

Images



SDS-PAGE

Image 1.