



[Go to Product page](#)

Datasheet for ABIN571185

## anti-ALDH9A1 antibody (Internal Region)

### 2 Images

#### Overview

Quantity:	100 µg
Target:	ALDH9A1
Binding Specificity:	Internal Region
Reactivity:	Human
Host:	Goat
Clonality:	Polyclonal
Conjugate:	This ALDH9A1 antibody is un-conjugated
Application:	Western Blotting (WB), ELISA, Immunohistochemistry (IHC)

#### Product Details

Purpose:	ALDH9A1
Immunogen:	C-QKEILDKFTEEVVKQ
Sequence:	QKEILDKFTE EVVKQ
Isotype:	IgG
Cross-Reactivity:	Cow, Human
Purification:	Purified from goat serum by ammonium sulphate precipitation followed by antigen affinity chromatography using the immunizing peptide.
Grade:	Verified

## Target Details

---

Target:	ALDH9A1
Alternative Name:	ALDH9A1 ( <a href="#">ALDH9A1 Products</a> )
Background:	ALDH9A1, aldehyde dehydrogenase 9 family, member A1, ALDH4, ALDH7, ALDH9, E3, TMABADH, 4-trimethylaminobutyraldehyde dehydrogenase, R-aminobutyraldehyde dehydrogenase, aldehyde dehydrogenase (NAD+), aldehyde dehydrogenase 9A1, aldehyde dehydrogenase E3 is
Gene ID:	223
NCBI Accession:	<a href="#">NP_000687</a>

## Application Details

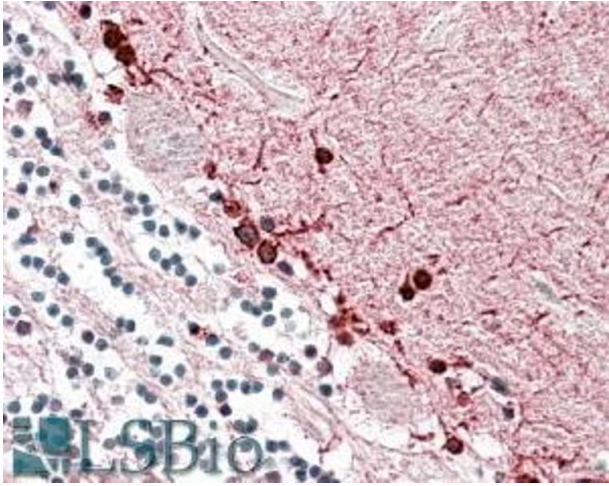
---

Application Notes:	<p>Immunohistochemistry: In paraffin embedded Human Cerebellum shows staining of a few cells between the Granular Cell layer and the Molecular Layer of the Cerebellum. Please note the unstained Purkinje cell at 10 O'clock. Recommended concentration, 3-5 µg/mL</p> <p>Western Blot: Approx 50 kDa band observed in Human Kidney and Liver lysates (calculated MW of 56.3 kDa according to NP_000687.3). Recommended concentration: 0.3-1 µg/mL.</p> <p>Peptide ELISA: antibody detection limit dilution 1:16000.</p>
Restrictions:	For Research Use only

## Handling

---

Format:	Liquid
Concentration:	0.5 mg/mL
Buffer:	Supplied at 0.5 mg/mL in Tris saline, 0.02 % sodium azide, pH 7.3 with 0.5 % bovine serum albumin.
Preservative:	Sodium azide
Precaution of Use:	This product contains Sodium azide: a POISONOUS AND HAZARDOUS SUBSTANCE which should be handled by trained staff only.
Handling Advice:	Minimize freezing and thawing.
Storage:	-20 °C
Storage Comment:	Aliquot and store at -20°C, with minimal freeze/thawing. A working aliquot may be refrigerated at 4°C for a few weeks and still remain viable.



### Immunohistochemistry

**Image 1.** ABIN571185 (3.8 $\mu$ g/ml) staining of paraffin embedded Human Cerebellum. Steamed antigen retrieval with citrate buffer pH 6, AP-staining.



### Western Blotting

**Image 2.** ABIN571185 (0.3 $\mu$ g/ml) staining of Human Kidney lysate (35 $\mu$ g protein in RIPA buffer). Primary incubation was 1 hour. Detected by chemiluminescence.