

Datasheet for ABIN5711879

TUBb6 Protein (AA 1-446, full length) (His-SUMO Tag)[Go to Product page](#)

1 Image

Overview

Quantity:	100 µg
Target:	TUBb6
Protein Characteristics:	full length, AA 1-446
Origin:	Human
Source:	Escherichia coli (E. coli)
Protein Type:	Recombinant
Purification tag / Conjugate:	This TUBb6 protein is labelled with His-SUMO Tag.
Application:	SDS-PAGE (SDS)

Product Details

Sequence:	MREIVHIQAG QCGNQIGTKF WEVISDEHGI DPAGGYVGDS ALQLERINVY YNESSSQKYV PRAALVDLEP GTMDSVRSGP FGQLFRPDNF IFGQTGAGNN WAKGHYTEGA ELVDAVLDDV RKECEHCDCL QGFQLTHSLG GGTGSGMGTL LISKIREEFP DRIMNTFSVM PSPKVSDTV EPYNATLSVH QLVENTDETY CIDNEALYDI CFRTLKLTTP TYGDLNHLVS ATMSGVTTSL RFPGQLNADL RKLAVNMVPF PRLHFFMPGF APLTSRGSQQ YRALTVPELT QQMFDARNMM AACDPRHGRY LTVATVFRGP MSMKEVDEQM LAIQSKNSSY FVEWIPNNVK VAVCDIPPRG LKMASTFIGN STAIQELFKR ISEQFSAMFR RKAFLHWFTG EGMDEMEFTE AESNMNDLVS EYQQYQDATA NDGEEAFEDE EEEIDG
Purification:	SDS-PAGE
Purity:	> 90 %

Target Details

Target:	TUBb6
Alternative Name:	TBB6 (TUBb6 Products)
Background:	Tubulin is the major constituent of microtubules. It binds two moles of GTP, one at an exchangeable site on the beta chain and one at a non-exchangeable site on the alpha chain .
Molecular Weight:	65.8 kDa
UniProt:	Q9BUF5
Pathways:	Microtubule Dynamics

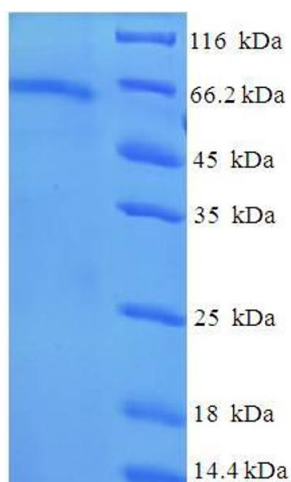
Application Details

Application Notes:	Optimal working dilution should be determined by the investigator.
Restrictions:	For Research Use only

Handling

Format:	Liquid
Concentration:	0.1-2 mg/mL
Buffer:	20 mM Tris-HCl based buffer, pH 8.0
Storage:	-80 °C, 4 °C, -20 °C
Storage Comment:	Store at -20°C, for extended storage, conserve at -20°C or -80°C. Repeated freezing and thawing is not recommended. Store working aliquots at 4°C for up to one week.

Images



SDS-PAGE

Image 1.