

## Datasheet for ABIN571188 **anti-FANCL antibody (Internal Region)**

[Go to Product page](#)

### 1 Image

#### Overview

Quantity:	100 µg
Target:	FANCL
Binding Specificity:	Internal Region
Reactivity:	Human
Host:	Goat
Clonality:	Polyclonal
Conjugate:	This FANCL antibody is un-conjugated
Application:	Western Blotting (WB), ELISA

#### Product Details

Purpose:	FANCL
Immunogen:	C-QNLKDVLEIDFP
Sequence:	QNLKDVLEID FP
Isotype:	IgG
Specificity:	This antibody is expected to recognize both isoforms (NP_001108108.1, NP_060532.2).
Cross-Reactivity:	Cow, Dog, Human, Mouse, Rat
Purification:	Purified from goat serum by ammonium sulphate precipitation followed by antigen affinity chromatography using the immunizing peptide.
Grade:	Verified

## Target Details

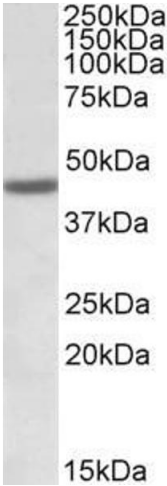
Target:	FANCL
Alternative Name:	FANCL ( <a href="#">FANCL Products</a> )
Background:	FANCL, Fanconi anemia, complementation group L, FAAP43, FLJ10335, PHF9, POG, PHD finger protein 9
Gene ID:	55120, 67030, 305600
NCBI Accession:	<a href="#">NP_001108108</a> , <a href="#">NP_060532</a>
Pathways:	<a href="#">DNA Damage Repair</a>

## Application Details

Application Notes:	Western Blot: Approx 45 kDa band observed in Human Bone Marrow lysates (calculated MW of 43.4 kDa according to NP_001108108.1). Recommended concentration: 1-3 µg/mL. Peptide ELISA: antibody detection limit dilution 1:16000.
Restrictions:	For Research Use only

## Handling

Format:	Liquid
Concentration:	0.5 mg/mL
Buffer:	Supplied at 0.5 mg/mL in Tris saline, 0.02 % sodium azide, pH 7.3 with 0.5 % bovine serum albumin.
Preservative:	Sodium azide
Precaution of Use:	This product contains Sodium azide: a POISONOUS AND HAZARDOUS SUBSTANCE which should be handled by trained staff only.
Handling Advice:	Minimize freezing and thawing.
Storage:	-20 °C
Storage Comment:	Aliquot and store at -20°C, with minimal freeze/thawing. A working aliquot may be refrigerated at 4°C for a few weeks and still remain viable.



Western Blotting

**Image 1.** ABIN571188 (1µg/ml) staining of Human Bone Marrow lysate (35µg protein in RIPA buffer). Primary incubation was 1 hour. Detected by chemiluminescence.