

Datasheet for ABIN571189  
**anti-GLUT4 antibody (C-Term)**[Go to Product page](#)

## 2 Images

## Overview

Quantity:	100 µg
Target:	GLUT4 (SLC2A4)
Binding Specificity:	C-Term
Reactivity:	Human, Mouse
Host:	Goat
Clonality:	Polyclonal
Conjugate:	This GLUT4 antibody is un-conjugated
Application:	Western Blotting (WB), Immunohistochemistry (IHC), ELISA

## Product Details

Purpose:	SLC2A4 / GLUT4
Immunogen:	C-TELEYLGPDEND
Sequence:	TELEYLGPDE ND
Isotype:	IgG
Cross-Reactivity:	Cow, Human, Mouse, Pig, Rat
Purification:	Purified from goat serum by ammonium sulphate precipitation followed by antigen affinity chromatography using the immunizing peptide.
Grade:	Verified

## Target Details

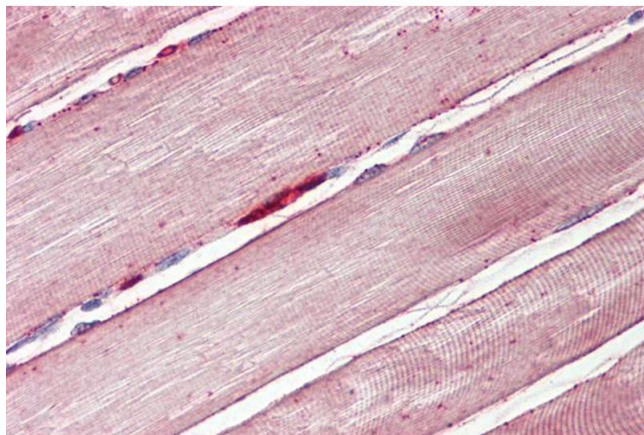
Target:	GLUT4 (SLC2A4)
Alternative Name:	SLC2A4 ( <a href="#">SLC2A4 Products</a> )
Background:	SLC2A4, solute carrier family 2 (facilitated glucose transporter), member 4, GLUT4, glucose transporter 4, insulin-responsive glucose transporter type 4
Gene ID:	6517, 20528, 25139
NCBI Accession:	<a href="#">NP_001033</a>
Pathways:	<a href="#">AMPK Signaling</a> , <a href="#">Carbohydrate Homeostasis</a> , <a href="#">Proton Transport</a> , <a href="#">Brown Fat Cell Differentiation</a> , <a href="#">Warburg Effect</a>

## Application Details

Application Notes:	Immunohistochemistry: Paraffin embedded Human Skeletal Muscle. Recommended concentration: 3.75 µg/mL.  Western Blot: Approx 40-45 kDa band observed in Mouse Heart lysates (calculated MW of 54.8 kDa according to Human NP_001033.1 and Mouse NP_033230.2). The observed molecular weight corresponds to earlier findings in literature with different antibodies (Fis  Peptide ELISA: antibody detection limit dilution 1:16000.
Restrictions:	For Research Use only

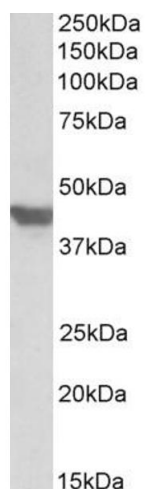
## Handling

Format:	Liquid
Concentration:	0.5 mg/mL
Buffer:	Supplied at 0.5 mg/mL in Tris saline, 0.02 % sodium azide, pH 7.3 with 0.5 % bovine serum albumin.
Preservative:	Sodium azide
Precaution of Use:	This product contains Sodium azide: a POISONOUS AND HAZARDOUS SUBSTANCE which should be handled by trained staff only.
Handling Advice:	Minimize freezing and thawing.
Storage:	-20 °C
Storage Comment:	Aliquot and store at -20°C, with minimal freeze/thawing. A working aliquot may be refrigerated at 4°C for a few weeks and still remain viable.



#### Immunohistochemistry

**Image 1.** ABIN571189 (3.75µg/ml) staining of paraffin embedded Human Skeletal Muscle. Steamed antigen retrieval with citrate buffer pH 6, AP-staining.



#### Western Blotting

**Image 2.** ABIN571189 (1µg/ml) staining of Mouse Heart lysate (35µg protein in RIPA buffer). Detected by chemiluminescence.