

Datasheet for ABIN571190

**anti-NUP107 antibody (Internal Region)****2** Images[Go to Product page](#)

## Overview

|                      |                                       |
|----------------------|---------------------------------------|
| Quantity:            | 100 µg                                |
| Target:              | NUP107                                |
| Binding Specificity: | Internal Region                       |
| Reactivity:          | Human, Mouse                          |
| Host:                | Goat                                  |
| Clonality:           | Polyclonal                            |
| Conjugate:           | This NUP107 antibody is un-conjugated |
| Application:         | Western Blotting (WB), ELISA          |

## Product Details

|                   |   |
|-------------------|---|
| Purpose:          | NUP107  |
| Immunogen:        | C-PLPAEDDNAIREH   |
| Sequence:         | PLPAEDDNAI REH  |
| Isotype:          | IgG   |
| Cross-Reactivity: | Cow, Dog, Human, Mouse, Rat   |
| Purification:     | Purified from goat serum by ammonium sulphate precipitation followed by antigen affinity chromatography using the immunizing peptide. |
| Grade:            | Verified  |

## Target Details

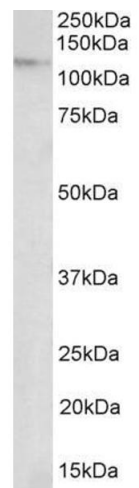
|                   |  |
|-------------------|--|
| Target:           | NUP107                                       |
| Alternative Name: | NUP107 ( <a href="#">NUP107 Products</a> )   |
| Background:       | NUP107, nucleoporin 107 kDa, NUP84           |
| Gene ID:          | 57122, 103468, 116555                        |
| NCBI Accession:   | <a href="#">NP_065134</a>                    |
| Pathways:         | <a href="#">Protein targeting to Nucleus</a> |

## Application Details

|                    |  |
|--------------------|--|
| Application Notes: | Western Blot: Approx 100 kDa band observed in Human Peripheral Blood Mononucleocytes lysates (calculated MW of 106 kDa according to Human NP_065134.1) and 120 kDa in nuclear lysates of NIH3T3 (calculated MW of 107 kDa according to Mouse NP_598771.1). Recomme<br>Peptide ELISA: antibody detection limit dilution 1:8000. |
| Restrictions:      | For Research Use only  |

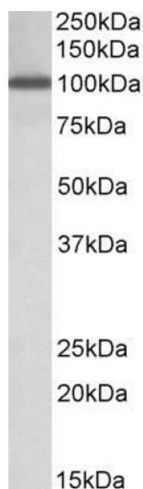
## Handling

|                    |  |
|--------------------|--|
| Format:            | Liquid   |
| Concentration:     | 0.5 mg/mL  |
| Buffer:            | Supplied at 0.5 mg/mL in Tris saline, 0.02 % sodium azide, pH 7.3 with 0.5 % bovine serum albumin.   |
| Preservative:      | Sodium azide   |
| Precaution of Use: | This product contains Sodium azide: a POISONOUS AND HAZARDOUS SUBSTANCE which should be handled by trained staff only.                         |
| Handling Advice:   | Minimize freezing and thawing.   |
| Storage:           | -20 °C   |
| Storage Comment:   | Aliquot and store at -20°C, with minimal freeze/thawing. A working aliquot may be refrigerated at 4°C for a few weeks and still remain viable. |



#### Western Blotting

**Image 1.** ABIN571190 (2µg/ml) staining of nuclear lysate of NIH3T3 (35µg protein in RIPA buffer). Primary incubation was 1 hour. Detected by chemiluminescence.



#### Western Blotting

**Image 2.** ABIN571190 (1µg/ml) staining of Peripheral Blood Lymphocytes lysate (35µg protein in RIPA buffer). Primary incubation was 1 hour. Detected by chemiluminescence.