

Datasheet for ABIN5711905  
**MSRA Protein (AA 24-235) (His tag)**



[Go to Product page](#)

1 Image

## Overview

Quantity:	100 µg
Target:	MSRA
Protein Characteristics:	AA 24-235
Origin:	Human
Source:	Escherichia coli (E. coli)
Protein Type:	Recombinant
Purification tag / Conjugate:	This MSRA protein is labelled with His tag.
Application:	SDS-PAGE (SDS)

## Product Details

Sequence:	GYGRKKRRQR RRGLEGNSAS NIVSPQEALP GRKEQTPVAA KHHVNGNRTV EPFPEGTQMA VFGMGCFWGA ERKFWVLKGV YSTQVGFAGG YTSNPTYKEV CSEKTGHAEV VRVVYQPEHM SFEELLKVFW ENHDPTQGMR QGNDHGTQYR SAIYPTSAKQ MEAALSSKEN YQKVLSEHGF GPITTDIREG QTFYYAEDYH QQYLSKNPNG YCGLGGTGVS CPVGIKK
Purification:	SDS-PAGE
Purity:	> 90 %

## Target Details

Target:	MSRA
Alternative Name:	MSRA ( <a href="#">MSRA Products</a> )
Background:	Has an important function as a repair enzyme for proteins that have been inactivated by

## Target Details

oxidation. Catalyzes the reversible oxidation-reduction of methionine sulfoxide in proteins to methionine.

Molecular Weight: 29.5 kDa

UniProt: [Q9UJ68](#)

## Application Details

Application Notes: Optimal working dilution should be determined by the investigator.

Restrictions: For Research Use only

## Handling

Format: Liquid

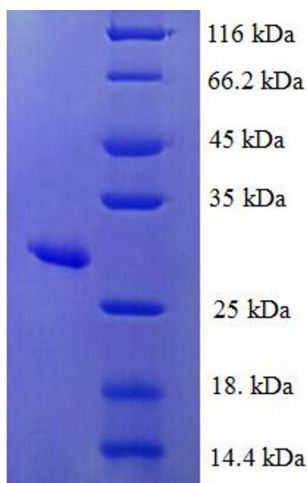
Concentration: 0.1-2 mg/mL

Buffer: 20 mM Tris-HCl based buffer, pH 8.0

Storage: -80 °C, 4 °C, -20 °C

Storage Comment: Store at -20°C, for extended storage, conserve at -20°C or -80°C. Repeated freezing and thawing is not recommended. Store working aliquots at 4°C for up to one week.

## Images



### SDS-PAGE

Image 1.