



[Go to Product page](#)

Datasheet for ABIN571191

## anti-IMP3 antibody (Internal Region)

### 1 Image

#### Overview

Quantity:	100 µg
Target:	IMP3
Binding Specificity:	Internal Region
Reactivity:	Human
Host:	Goat
Clonality:	Polyclonal
Conjugate:	This IMP3 antibody is un-conjugated
Application:	Western Blotting (WB), ELISA

#### Product Details

Purpose:	IMP3
Immunogen:	C-QRREDYTRYNQLSR
Sequence:	QRREDYTRYN QLSR
Isotype:	IgG
Cross-Reactivity:	Cow, Dog, Human, Mouse, Pig, Rat
Purification:	Purified from goat serum by ammonium sulphate precipitation followed by antigen affinity chromatography using the immunizing peptide.
Grade:	Verified

## Target Details

---

Target:	IMP3
Alternative Name:	IMP3 ( <a href="#">IMP3 Products</a> )
Background:	IMP3, IMP3, U3 small nucleolar ribonucleoprotein, homolog (yeast), BRMS2, C15orf12, DKFZp586L0118, FLJ10968, MRPS4, IMP3, U3 small nucleolar ribonucleoprotein, OTTHUMP00000183524, U3 snoRNP protein 3 homolog
Gene ID:	55272, 102462, 315697
NCBI Accession:	<a href="#">NP_060755</a>

## Application Details

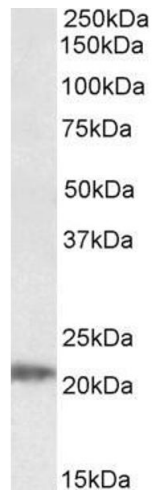
---

Application Notes:	Western Blot: Approx 22 kDa band observed in Human Liver lysates (calculated MW of 21.9 kDa according to NP_060755.1). Recommended concentration: 0.05-0.2 µg/mL. Peptide ELISA: antibody detection limit dilution 1:4000.
Restrictions:	For Research Use only

## Handling

---

Format:	Liquid
Concentration:	0.5 mg/mL
Buffer:	Supplied at 0.5 mg/mL in Tris saline, 0.02 % sodium azide, pH 7.3 with 0.5 % bovine serum albumin.
Preservative:	Sodium azide
Precaution of Use:	This product contains Sodium azide: a POISONOUS AND HAZARDOUS SUBSTANCE which should be handled by trained staff only.
Handling Advice:	Minimize freezing and thawing.
Storage:	-20 °C
Storage Comment:	Aliquot and store at -20°C, with minimal freeze/thawing. A working aliquot may be refrigerated at 4°C for a few weeks and still remain viable.



### Western Blotting

**Image 1.** ABIN571191 (0.05 $\mu$ g/ml) staining of Human Liver lysate (35 $\mu$ g protein in RIPA buffer). Primary incubation was 1 hour. Detected by chemiluminescence.