

Datasheet for ABIN5711919

anti-IL2 Receptor beta antibody (APC)



[Go to Product page](#)

3 Images

Overview

Quantity:	100 tests
Target:	IL2 Receptor beta (IL2RB)
Reactivity:	Human
Host:	Mouse
Clonality:	Monoclonal
Conjugate:	This IL2 Receptor beta antibody is conjugated to APC
Application:	Flow Cytometry (FACS)

Product Details

Immunogen:	TL-Mor cell line
Clone:	TU27
Isotype:	IgG1 kappa
Specificity:	The mouse monoclonal antibody TU27 recognizes an extracellular epitope of CD122 (IL-2R beta), a 70-75 kDa type I transmembrane glycoprotein constitutively expressed by NK cells and a T cell subset, and upregulated upon activation.
Cross-Reactivity (Details):	Human
Purification:	Purified antibody is conjugated with activated allophycocyanin (APC) under optimum conditions and unconjugated antibody and free fluorochrome are removed by size-exclusion chromatography.

Target Details

Target:	IL2 Receptor beta (IL2RB)
Alternative Name:	CD122 (IL2RB Products)
Background:	Interleukin 2 receptor subunit beta,CD122 (IL-2/IL-15R beta) constitutes together with CD132 (common gamma chain) and with CD25 (IL-2/IL15R alpha) the intermediate (CD122+CD132) and the high affinity (CD122+CD132+CD25) IL-2 and IL-15 receptor complex. CD122 is expressed on NK cells and lymphocytes, but at low level, unless the cell is activated. The cytoplasmic part of CD122 binds to Src-family and Jak-family kinases. The biological effect of CD122 ligation depends on whether IL-2 or IL-15 is bound to the receptor complex.,IL2RB, IL15RB, P70-75
Gene ID:	3560
UniProt:	P14784
Pathways:	JAK-STAT Signaling , Growth Factor Binding

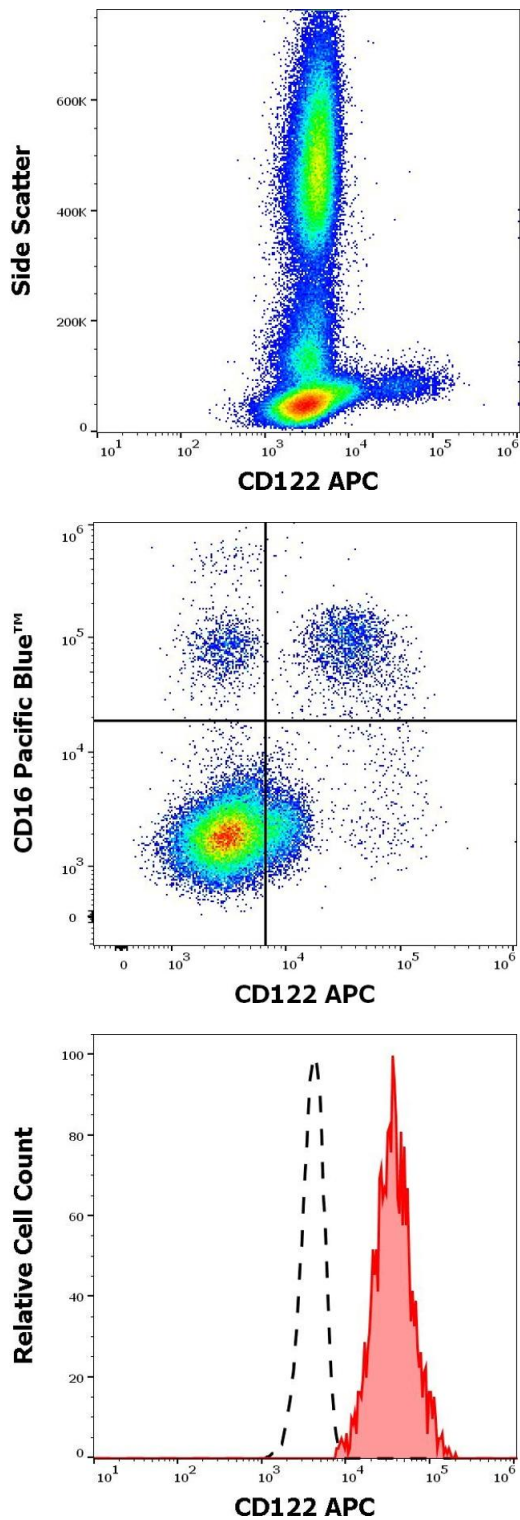
Application Details

Application Notes:	Flow cytometry: The reagent is designed for analysis of human blood cells using 10 µL reagent / 100 µL of whole blood or 10 ⁶ cells in a suspension. The content of a vial (1 ml) is sufficient for 100 tests.
Comment:	The purified antibody is conjugated with cross-linked Allophycocyanin (APC) under optimum conditions. The conjugate is purified by size-exclusion chromatography and adjusted for direct use. No reconstitution is necessary.
Restrictions:	For Research Use only

Handling

Buffer:	Stabilizing phosphate buffered saline (PBS), pH 7.4, 15 mM sodium azide
Preservative:	Sodium azide
Precaution of Use:	This product contains Sodium azide: a POISONOUS AND HAZARDOUS SUBSTANCE which should be handled by trained staff only.
Handling Advice:	The purified antibody is conjugated with cross-linked Allophycocyanin (APC) under optimum conditions. The conjugate is purified by size-exclusion chromatography and adjusted for direct use. No reconstitution is necessary.
Storage:	4 °C

Storage Comment: Store at 2-8°C. Protect from prolonged exposure to light. Do not freeze.



Flow Cytometry

Image 1. Flow cytometry surface staining pattern of human peripheral whole blood stained using anti-human CD122 (TU27) APC antibody (10 µL reagent / 100 µL of peripheral whole blood).

Flow Cytometry

Image 2. Flow cytometry multicolor surface staining pattern of human lymphocytes using anti-human CD122 (TU27) APC antibody (10 µL reagent / 100 µL of peripheral whole blood) and anti-human CD16 (3G8) Pacific Blue antibody (4 µL reagent / 100 µL of peripheral whole blood).

Flow Cytometry

Image 3. Separation of human CD122 positive CD16 positive NK cells (red-filled) from neutrophil granulocytes (black-dashed) in flow cytometry analysis (surface staining) of human peripheral whole blood stained using anti-human CD122 (TU27) PE antibody (10 µL reagent / 100 µL of peripheral whole blood).