

Datasheet for ABIN571192
anti-ETFB antibody (AA 152-165)[Go to Product page](#)

2 Images

Overview

Quantity:	100 µg
Target:	ETFB
Binding Specificity:	AA 152-165
Reactivity:	Human, Mouse, Rat
Host:	Goat
Clonality:	Polyclonal
Conjugate:	This ETFB antibody is un-conjugated
Application:	Western Blotting (WB), ELISA, Immunohistochemistry (IHC)

Product Details

Purpose:	ETFB / FP585 (aa 152-165)
Immunogen:	C-QVTLEGDKLKVERE
Sequence:	QVTLEGDKLK VERE
Isotype:	IgG
Specificity:	This antibody is expected to recognize both reported isoforms (NP_001976.1, NP_001014763.1). Amino acid numbering in the name above refers to NP_001976.1).
Cross-Reactivity:	Cow, Dog, Human, Mouse, Rat
Purification:	Purified from goat serum by ammonium sulphate precipitation followed by antigen affinity chromatography using the immunizing peptide.
Grade:	Verified

Target Details

Target:	ETFB
Alternative Name:	ETFB (ETFB Products)
Background:	ETFB, electron-transfer-flavoprotein, beta polypeptide, FP585, MADD, electron transfer flavoprotein beta subunit, electron transfer flavoprotein beta-subunit, electron transfer flavoprotein, beta polypeptide, electron-transferring-flavoprotein, beta polyp
Gene ID:	2109, 110826, 292845
NCBI Accession:	NP_001976 , NP_001014763

Application Details

Application Notes:	<p>Immunohistochemistry: In paraffin embedded Human Liver shows mitochondrial staining in hepatocytes. Recommended concentration, 3-5 µg/mL.</p> <p>Western Blot: Approx 27 kDa band observed in Human, Mouse and Rat Liver lysates (calculated MW of 27.8 kDa according to NP_001976.1). Recommended concentration: 1-3 µg/mL.</p> <p>Peptide ELISA: antibody detection limit dilution 1:8000.</p>
Restrictions:	For Research Use only

Handling

Format:	Liquid
Concentration:	0.5 mg/mL
Buffer:	Supplied at 0.5 mg/mL in Tris saline, 0.02 % sodium azide, pH 7.3 with 0.5 % bovine serum albumin.
Preservative:	Sodium azide
Precaution of Use:	This product contains Sodium azide: a POISONOUS AND HAZARDOUS SUBSTANCE which should be handled by trained staff only.
Handling Advice:	Minimize freezing and thawing.
Storage:	-20 °C
Storage Comment:	Aliquot and store at -20°C, with minimal freeze/thawing. A working aliquot may be refrigerated at 4°C for a few weeks and still remain viable.

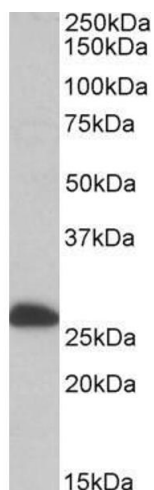


Image 1. ABIN571192 (0.1 µg/mL) staining of Human Liver lysate (35 µg protein in RIPA buffer). Primary incubation was 1 hour. Detected by chemiluminescence.

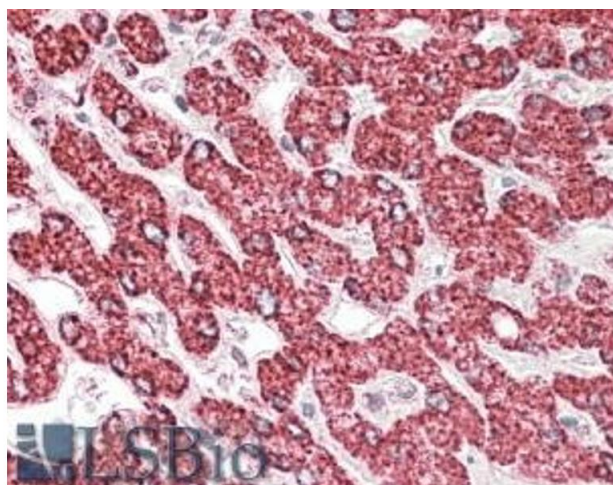


Image 2. ABIN571192 (3.8 µg/mL) staining of paraffin embedded Human Liver. Steamed antigen retrieval with citrate buffer pH 6, AP-staining.