

Datasheet for ABIN571193
anti-ETFB antibody (AA 231-243)

2 Images

[Go to Product page](#)

Overview

| | |
|----------------------|--|
| Quantity: | 100 µg |
| Target: | ETFB |
| Binding Specificity: | AA 231-243 |
| Reactivity: | Human, Mouse, Rat |
| Host: | Goat |
| Clonality: | Polyclonal |
| Conjugate: | This ETFB antibody is un-conjugated |
| Application: | Western Blotting (WB), ELISA, Immunohistochemistry (IHC) |

Product Details

| | |
|-------------------|---|
| Purpose: | ETFB (aa 231-243) |
| Immunogen: | C-PQRTAGVKVETTE |
| Sequence: | PQRTAGVKVE TTE |
| Isotype: | IgG |
| Specificity: | This antibody is expected to recognize both reported isoforms (NP_001976.1, NP_001014763.1). |
| Cross-Reactivity: | Cow, Dog, Human, Mouse, Rat |
| Purification: | Purified from goat serum by ammonium sulphate precipitation followed by antigen affinity chromatography using the immunizing peptide. |
| Grade: | Verified |

Target Details

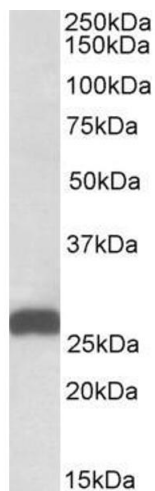
| | |
|-------------------|---|
| Target: | ETFB |
| Alternative Name: | ETFB (ETFB Products) |
| Background: | ETFB, electron-transfer-flavoprotein, beta polypeptide, FP585, MADD, electron transfer flavoprotein beta subunit, electron transfer flavoprotein beta-subunit, electron transfer flavoprotein, beta polypeptide, electron-transferring-flavoprotein, beta polyp |
| Gene ID: | 2109, 110826, 292845 |
| NCBI Accession: | NP_001976 , NP_001014763 |

Application Details

| | |
|--------------------|---|
| Application Notes: | <p>Immunohistochemistry: In paraffin embedded Human Liver shows mitochondrial staining in hepatocytes. Recommended concentration, 3-5 µg/mL.</p> <p>Western Blot: Approx 26 kDa band observed in Human, Mouse and Rat Liver lysates (calculated MW of 27.8 kDa according to NP_001976.1). Recommended concentration: 0.01-0.03 µg/mL.</p> <p>Peptide ELISA: antibody detection limit dilution 1:8000.</p> |
| Restrictions: | For Research Use only |

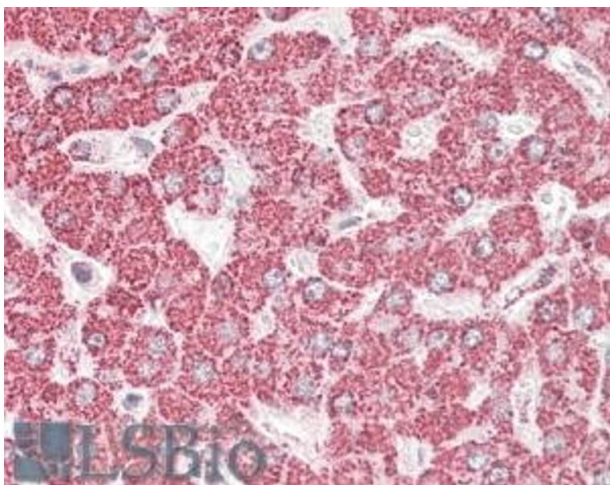
Handling

| | |
|--------------------|--|
| Format: | Liquid |
| Concentration: | 0.5 mg/mL |
| Buffer: | Supplied at 0.5 mg/mL in Tris saline, 0.02 % sodium azide, pH 7.3 with 0.5 % bovine serum albumin. |
| Preservative: | Sodium azide |
| Precaution of Use: | This product contains Sodium azide: a POISONOUS AND HAZARDOUS SUBSTANCE which should be handled by trained staff only. |
| Handling Advice: | Minimize freezing and thawing. |
| Storage: | -20 °C |
| Storage Comment: | Aliquot and store at -20°C, with minimal freeze/thawing. A working aliquot may be refrigerated at 4°C for a few weeks and still remain viable. |



Western Blotting

Image 1. ABIN571193 (0.01 μ g/ml) staining of Mouse Liver lysate (35 μ g protein in RIPA buffer). Primary incubation was 1 hour. Detected by chemiluminescence.



Immunohistochemistry

Image 2. ABIN571193 (3.8 μ g/ml) staining of paraffin embedded Human Liver. Steamed antigen retrieval with citrate buffer pH 6, AP-staining.