

Datasheet for ABIN5711942
anti-Lactoferrin antibody (PE)



[Go to Product page](#)

2 Images

Overview

Quantity:	100 tests
Target:	Lactoferrin (LTF)
Reactivity:	Human
Host:	Mouse
Clonality:	Monoclonal
Conjugate:	This Lactoferrin antibody is conjugated to PE
Application:	Intracellular Flow Cytometry (ICFC)

Product Details

Purpose:	Anti-Lactoferrin PE
Immunogen:	human lactoferrin
Clone:	LF5-1D2
Isotype:	IgG1
Specificity:	The mouse monoclonal antibody LF5-1D2 recognizes lactoferrin, an iron-binding secreted glycoprotein of about 90 kDa, which has anti-inflammatory, immunomodulatory and anti-microbial properties.
Cross-Reactivity (Details):	Human
Purification:	Purified antibody is conjugated with R-phycoerythrin (PE) under optimum conditions. Unconjugated antibody and free fluorochrome are removed by size-exclusion chromatography.

Target Details

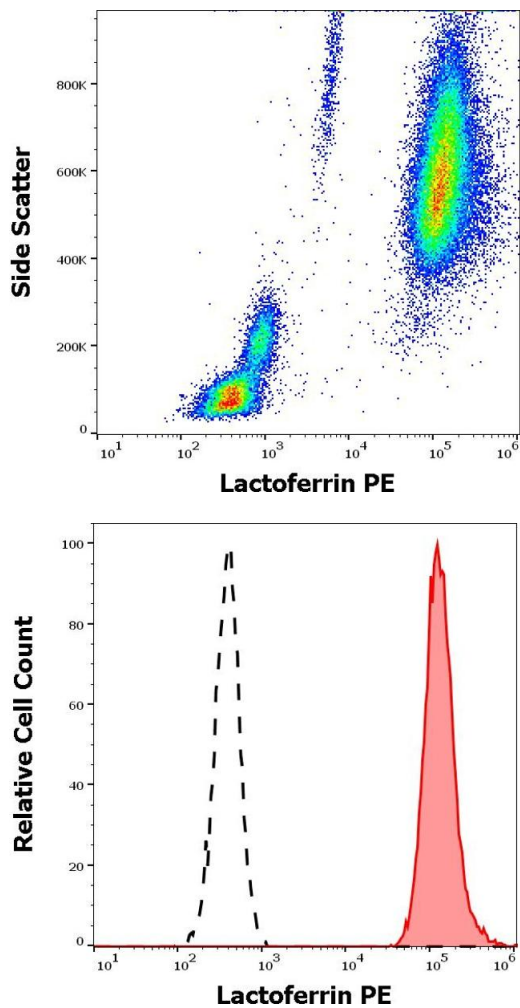
Target:	Lactoferrin (LTF)
Alternative Name:	Lactoferrin (LTF Products)
Background:	<p>Lactotransferrin, Lactoferrin is an iron-binding glycoprotein of the transferrin family, which is released to most biological fluids, with particularly high levels in milk. It has anti-inflammatory (e.g. sequestering of lipopolysaccharides), anti-microbial (e.g. blocking of viral attachment to the target cell), and immunomodulatory properties and can prevent infections in young children. Lactoferrin is considered to bridge the innate and adaptive immune responses. It also participates in iron homeostasis, regulation of cellular growth and differentiation and protection against cancer development and metastasis. Besides biological fluids it is also found in the secondary granules of neutrophils., LF, Lactotransferrin, LTF</p>
Gene ID:	4057
UniProt:	P02788
Pathways:	Transition Metal Ion Homeostasis

Application Details

Application Notes:	Flow cytometry: The reagent is designed for analysis of human blood cells using 10 µL reagent / 100 µL of whole blood or 10 ⁶ cells in a suspension. The content of a vial (1 ml) is sufficient for 100 tests. Intracellular staining.
Restrictions:	For Research Use only

Handling

Buffer:	Stabilizing phosphate buffered saline (PBS), pH 7.4, 15 mM sodium azide
Preservative:	Sodium azide
Precaution of Use:	This product contains Sodium azide: a POISONOUS AND HAZARDOUS SUBSTANCE which should be handled by trained staff only.
Handling Advice:	The purified antibody is conjugated with R-Phycoerythrin (PE) under optimum conditions. The conjugate is purified by size-exclusion chromatography and adjusted for direct use. No reconstitution is necessary.
Storage:	4 °C
Storage Comment:	Store at 2-8°C. Protect from prolonged exposure to light. Do not freeze.



Flow Cytometry

Image 1. Flow cytometry intracellular staining pattern of human peripheral whole blood stained using anti-human lactoferrin (LF5-1D2) PE antibody (10 µL reagent / 100 µL of peripheral whole blood).

Flow Cytometry

Image 2. Separation of human neutrophil granulocytes (red-filled) from lymphocytes (black-dashed) in flow cytometry analysis (intracellular staining) of human peripheral whole blood stained using anti-human lactoferrin (LF5-1D2) PE antibody (10 µL reagent / 100 µL of peripheral whole blood).